

ZFYV1 rabbit pAb

Catalog No :	YT7131
Reactivity :	Human;Mouse
Applications :	WB
Target :	ZFYV1
Fields :	>>Autophagy - animal;>>Pathways of neurodegeneration - multiple diseases
Gene Name :	ZFYVE1 DFCP1 KIAA1589 TAFF1 ZNFN2A1 PP10436
Protein Name :	ZFYV1
Human Gene Id :	53349
Human Swiss Prot No :	Q9HBF4
Mouse Gene Id :	217695
Mouse Swiss Prot No :	Q810J8
Immunogen :	Synthesized peptide derived from human ZFYV1 AA range: 318-368
Specificity :	This antibody detects endogenous levels of ZFYV1 at Human/Mouse
Formulation :	Liquid in PBS containing 50% glycerol, 0.5% BSA and 0.02% sodium azide.
Source :	Polyclonal, Rabbit,IgG
Dilution :	WB 1[?]500-2000
Purification :	The antibody was affinity-purified from rabbit antiserum by affinity-chromatography using epitope-specific immunogen.
Concentration :	1 mg/ml

Storage Stability : -15°C to -25°C/1 year(Do not lower than -25°C)

Molecularweight : 85kD

Background : The FYVE domain mediates the recruitment of proteins involved in membrane trafficking and cell signaling to phosphatidylinositol 3-phosphate-containing membranes. This protein contains two zinc-binding FYVE domains in tandem and is reported to localize to the Golgi apparatus. Alternative splicing results in multiple transcript variants. [provided by RefSeq, Aug 2013],

Function : sequence caution:Translated as Trp.,similarity:Contains 2 FYVE-type zinc fingers.,subcellular location:Resides predominantly in the cisternal stacks of the Golgi.,subunit:Binds to phosphatidylinositol-3-phosphate (PtdIns3P) through its FYVE-type zinc finger.,tissue specificity:Isoform 1 was expressed in all tissues examined, including, brain, placenta, lung, liver, skeletal muscle, pancreas and kidney. Both isoforms, 1 and 2 showed a high expression in heart. Isoform 2 is also detected in the testis.,

Subcellular Location : Golgi apparatus, Golgi stack . Golgi apparatus . Endoplasmic reticulum . Lipid droplet . Preautophagosomal structure . Mitochondrion . Resides predominantly in the cisternal stacks of the Golgi (PubMed:11256955). Colocalizes with TRIM13 on the perinuclear endoplasmic reticulum (PubMed:22178386). During starvation conditions, localizes to omegasomes which are endoplasmic reticulum connected strutures at the origin of preautophagosomal structures (PubMed:31293035, PubMed:25876663). Localizes to lipid droplets in the presence of oleic acid (PubMed:31293035, PubMed:30970241). .

Expression : [Isoform 2]: Highly expressed in heart. Also detected in the testis. ; [Isoform 1]: Expressed in all tissues examined, including, brain, placenta, lung, liver, skeletal muscle, pancreas and kidney. Highly expressed in heart.

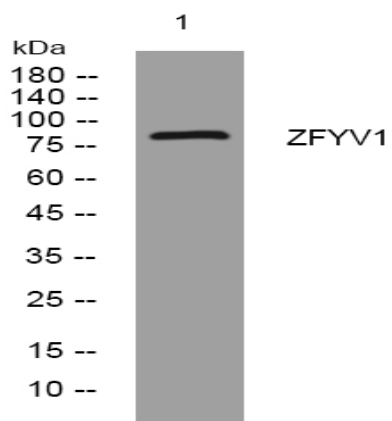
Sort : 24527

No4 : 1

Host : Rabbit

Modifications : Unmodified

Products Images



Western blot analysis of lysates from HpeG2 cells, primary antibody was diluted at 1:1000, 4° over night