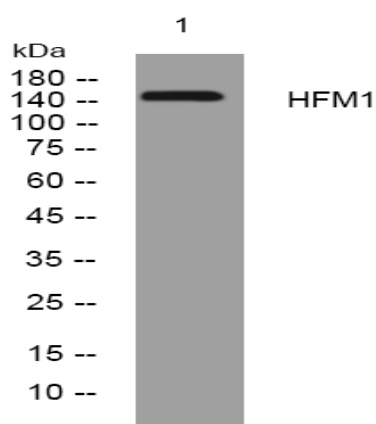


HFM1 rabbit pAb

Catalog No :	YT7128
Reactivity :	Human;Mouse
Applications :	WB
Target :	HFM1
Gene Name :	HFM1 SEC3D1
Protein Name :	HFM1
Human Gene Id :	164045
Human Swiss Prot No :	A2PYH4
Immunogen :	Synthesized peptide derived from human HFM1 AA range: 943-993
Specificity :	This antibody detects endogenous levels of HFM1 at Human
Formulation :	Liquid in PBS containing 50% glycerol, 0.5% BSA and 0.02% sodium azide.
Source :	Polyclonal, Rabbit,IgG
Dilution :	WB 1:500-2000
Purification :	The antibody was affinity-purified from rabbit antiserum by affinity-chromatography using epitope-specific immunogen.
Concentration :	1 mg/ml
Storage Stability :	-15°C to -25°C/1 year(Do not lower than -25°C)
Molecularweight :	158kD
Background :	The protein encoded by this gene is thought to be an ATP-dependent DNA helicase and is expressed mainly in germ-line cells. Defects in this gene are a cause of premature ovarian failure 9 (POF9). [provided by RefSeq, Apr 2014],

Function :	similarity:Belongs to the helicase family. SKI2 subfamily.,similarity:Contains 1 helicase ATP-binding domain.,similarity:Contains 1 helicase C-terminal domain.,similarity:Contains 1 SEC63 domain.,
Expression :	Preferentially expressed in testis and ovary.
Sort :	7339
No4 :	1
Host :	Rabbit
Modifications :	Unmodified

Products Images



Western blot analysis of lysates from U2OS cells, primary antibody was diluted at 1:1000, 4° over night