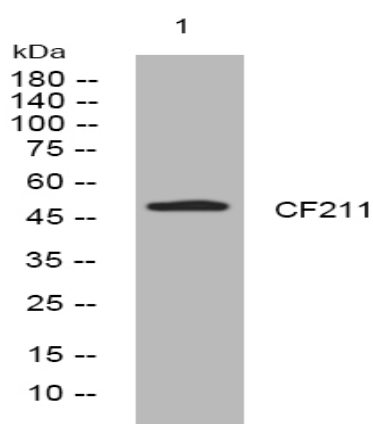


CF211 rabbit pAb

Catalog No :	YT7127
Reactivity :	Human;Mouse;Rat
Applications :	WB
Target :	CF211
Gene Name :	C6orf211
Protein Name :	CF211
Human Gene Id :	79624
Human Swiss Prot No :	Q9H993
Mouse Gene Id :	73419
Mouse Swiss Prot No :	A6H630
Rat Gene Id :	292267
Rat Swiss Prot No :	Q6AYT5
Immunogen :	Synthesized peptide derived from human CF211 AA range: 279-329
Specificity :	This antibody detects endogenous levels of CF211 at Human/Mouse/Rat
Formulation :	Liquid in PBS containing 50% glycerol, 0.5% BSA and 0.02% sodium azide.
Source :	Polyclonal, Rabbit,IgG
Dilution :	WB 1:500-2000
Purification :	The antibody was affinity-purified from rabbit antiserum by affinity-chromatography using epitope-specific immunogen.

Concentration :	1 mg/ml
Storage Stability :	-15°C to -25°C/1 year(Do not lower than -25°C)
Molecularweight :	49kD
Function :	similarity:Belongs to the UPF0364 family.,
Sort :	3876
No4 :	1
Host :	Rabbit
Modifications :	Unmodified

Products Images



Western blot analysis of lysates from MDA-MB cells, primary antibody was diluted at 1:1000, 4° over night