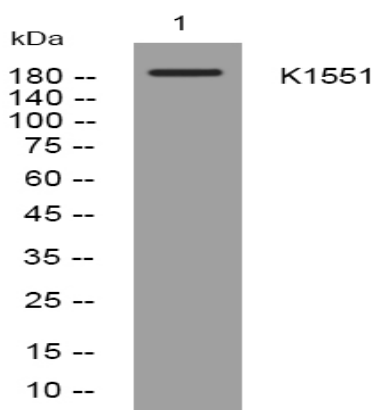


K1551 rabbit pAb

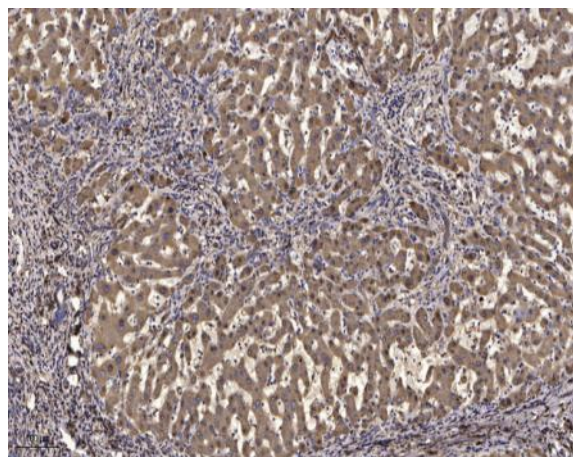
Catalog No :	YT7125
Reactivity :	Human;Mouse
Applications :	WB;IHC
Target :	K1551
Gene Name :	KIAA1551 C12orf35
Protein Name :	K1551
Human Gene Id :	55196
Human Swiss Prot No :	Q9HCM1
Mouse Gene Id :	67246
Mouse Swiss Prot No :	Q5DTW7
Immunogen :	Synthesized peptide derived from human K1551 AA range: 262-312
Specificity :	This antibody detects endogenous levels of K1551 at Human/Mouse
Formulation :	Liquid in PBS containing 50% glycerol, 0.5% BSA and 0.02% sodium azide.
Source :	Polyclonal, Rabbit,IgG
Dilution :	WB 1:500-2000;IHC 1:50-300
Purification :	The antibody was affinity-purified from rabbit antiserum by affinity-chromatography using epitope-specific immunogen.
Concentration :	1 mg/ml
Storage Stability :	-15°C to -25°C/1 year(Do not lower than -25°C)

Molecularweight : 192kD**Function :** sequence caution:Contaminating sequence.,sequence caution:Contaminating sequence. Potential poly-A sequence.,**Subcellular Location :** Nucleus . Localizes around gamma-tubulin during M phase. .**Sort :** 8822**No4 :** 1**Host :** Rabbit**Modifications :** Unmodified

Products Images



Western blot analysis of lysates from VEC cells, primary antibody was diluted at 1:1000, 4° over night



Immunohistochemical analysis of paraffin-embedded human liver cancer. 1, Antibody was diluted at 1:200(4° overnight). 2, Tris-EDTA,pH9.0 was used for antigen retrieval. 3,Secondary antibody was diluted at 1:200(room temperature, 45min).