

TXD12 rabbit pAb

Catalog No :	YT7124
Reactivity :	Human;Mouse;Rat
Applications :	WB
Target :	TXD12
Fields :	>>Glutathione metabolism;>>Metabolic pathways
Gene Name :	TXNDC12 TLP19 UNQ713/PRO1376
Protein Name :	TXD12
Human Gene Id :	51060
Human Swiss Prot No :	O95881
Mouse Gene Id :	66073
Mouse Swiss Prot No :	Q9CQU0
Rat Gene Id :	298370
Rat Swiss Prot No :	Q498E0
Immunogen :	Synthesized peptide derived from human TXD12 AA range: 118-168
Specificity :	This antibody detects endogenous levels of TXD12 at Human/Mouse/Rat
Formulation :	Liquid in PBS containing 50% glycerol, 0.5% BSA and 0.02% sodium azide.
Source :	Polyclonal, Rabbit,IgG
Dilution :	WB 1[?]500-2000
Purification :	The antibody was affinity-purified from rabbit antiserum by affinity-

chromatography using epitope-specific immunogen.

Concentration : 1 mg/ml

Storage Stability : -15°C to -25°C/1 year(Do not lower than -25°C)

Molecularweight : 19kD

Background : This gene encodes a member of the thioredoxin superfamily. Members of this family are characterized by a conserved active motif called the thioredoxin fold that catalyzes disulfide bond formation and isomerization. This protein localizes to the endoplasmic reticulum and has a single atypical active motif. The encoded protein is mainly involved in catalyzing native disulfide bond formation and displays activity similar to protein-disulfide isomerases. This protein may play a role in defense against endoplasmic reticulum stress. Alternate splicing results in both coding and non-coding variants. [provided by RefSeq, Mar 2012],

Function : catalytic activity:2 glutathione + protein-disulfide = glutathione disulfide + protein-dithiol.,cofactor:FAD.,function:Possesses significant protein thiol-disulfide oxidase activity.,function:Probable oxidoreductase that acts as a caspase-independent mitochondrial effector of apoptotic cell death. Extramitochondrial AIF induces nuclear chromatin condensation and large scale DNA fragmentation (in vitro). Binds to DNA in a sequence-independent manner.,similarity:Belongs to the FAD-dependent oxidoreductase family.,similarity:Contains 1 thioredoxin domain.,subcellular location:Translocated to the nucleus upon induction of apoptosis.,subunit:Interacts with XIAP.,tissue specificity:Widely expressed.,

Subcellular Location : Endoplasmic reticulum lumen .

Expression : Widely expressed.

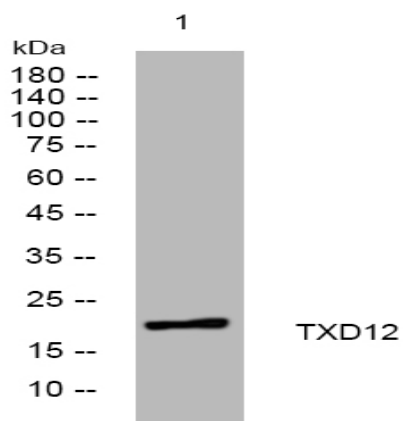
Sort : 23776

No4 : 1

Host : Rabbit

Modifications : Unmodified

Products Images



Western blot analysis of lysates from A431 cells, primary antibody was diluted at 1:1000, 4° over night