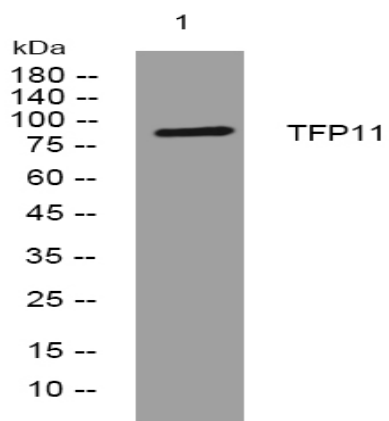


TFP11 rabbit pAb

Catalog No :	YT7123
Reactivity :	Human;Mouse;Rat
Applications :	WB
Target :	TFP11
Gene Name :	TFIP11 STIP HSPC006
Protein Name :	TFP11
Human Gene Id :	24144
Human Swiss Prot No :	Q9UBB9
Mouse Gene Id :	54723
Mouse Swiss Prot No :	Q9ERA6
Rat Gene Id :	288718
Rat Swiss Prot No :	Q5U2Y6
Immunogen :	Synthesized peptide derived from human TFP11 AA range: 210-260
Specificity :	This antibody detects endogenous levels of TFP11 at Human/Mouse/Rat
Formulation :	Liquid in PBS containing 50% glycerol, 0.5% BSA and 0.02% sodium azide.
Source :	Polyclonal, Rabbit,IgG
Dilution :	WB 1:500-2000
Purification :	The antibody was affinity-purified from rabbit antiserum by affinity-chromatography using epitope-specific immunogen.

Concentration :	1 mg/ml
Storage Stability :	-15°C to -25°C/1 year(Do not lower than -25°C)
Molecularweight :	92kD
Background :	TFIP11 is a nuclear speckle-localized protein that may play a role in spliceosome disassembly in Cajal bodies (Stanek et al., 2008 [PubMed 18367544]).[supplied by OMIM, Apr 2009],
Function :	function:May play a role in the differentiation of ameloblasts and odontoblasts or in the forming of the enamel extracellular matrix. May also be involved in pre-mRNA splicing.,similarity:Belongs to the TFP11/STIP family.,similarity:Contains 1 G-patch domain.,subunit:Interacts with TUFT1 (By similarity). Identified in the spliceosome C complex, at least composed of AQR, ASCC3L1, C19orf29, CDC40, CDC5L, CRNKL1, DDX23, DDX41, DDX48, DDX5, DGCR14, DHX35, DHX38, DHX8, EFTUD2, FRG1, GPATC1, HNRPA1, HNRPA2B1, HNRPA3, HNRPC, HNRPF, HNRPH1, HNRPK, HNRPM, HNRPR, HNRPU, KIAA1160, KIAA1604, LSM2, LSM3, MAGOH, MORG1, PABPC1, PLRG1, PNN, PPIE, PPIL1, PPIL3, PPWD1, PRPF19, PRPF4B, PRPF6, PRPF8, RALY, RBM22, RBM8A, RBMX, SART1, SF3A1, SF3A2, SF3A3, SF3B1, SF3B2, SF3B3, SFRS1, SKIV2L2, SNRPA1, SNRPB, SNRPB2, SNRPD1, SNRPD2, SNRPD3, SNRPE, SNRPF, SNRPG, SNW1, SRRM1, SRRM2, SYF2, SYNCRIP, TFIP11, THOC4, U
Subcellular Location :	Cytoplasm . Nucleus . In the nucleus localizes to unique speckle domains in close proximity to nuclear speckles and not identical to paraspeckles. .
Sort :	17076
No4 :	1
Host :	Rabbit
Modifications :	Unmodified

Products Images



Western blot analysis of lysates from HCT116 cells, primary antibody was diluted at 1:1000, 4° over night