

LEAP2 rabbit pAb

Catalog No :	YT7121
Reactivity :	Human;Mouse
Applications :	IHC;IF
Target :	LEAP2
Gene Name :	LEAP2
Protein Name :	LEAP2
Human Gene Id :	116842
Human Swiss Prot No :	Q969E1
Mouse Gene Id :	259301
Mouse Swiss Prot No :	Q91V13
Immunogen :	Synthesized peptide derived from human LEAP2 AA range: 21-71
Specificity :	This antibody detects endogenous levels of LEAP2 at Human/Mouse
Formulation :	Liquid in PBS containing 50% glycerol, 0.5% BSA and 0.02% sodium azide.
Source :	Polyclonal, Rabbit,IgG
Dilution :	IHC 1:50-200. IF 1:50-200
Purification :	The antibody was affinity-purified from rabbit antiserum by affinity-chromatography using epitope-specific immunogen.
Concentration :	1 mg/ml
Storage Stability :	-15°C to -25°C/1 year(Do not lower than -25°C)

Molecularweight : 8kD

Background : This gene encodes a cysteine-rich cationic antimicrobial peptide that is expressed predominantly in the liver. The mature peptide has activity against gram-positive bacteria and yeasts. [provided by RefSeq, Sep 2014],

Function : function:Has an antimicrobial activity.,similarity:Belongs to the LEAP2 family.,

Subcellular Location : Secreted.

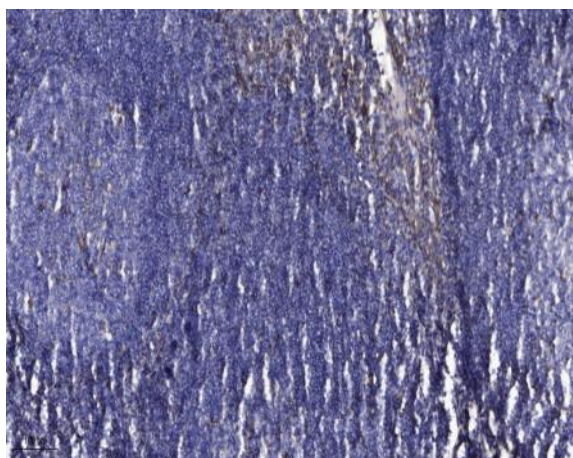
Sort : 9162

No4 : 1

Host : Rabbit

Modifications : Unmodified

Products Images



Immunohistochemical analysis of paraffin-embedded human tonsil. 1, Antibody was diluted at 1:200(4° overnight). 2, Tris-EDTA,pH9.0 was used for antigen retrieval. 3,Secondary antibody was diluted at 1:200(room temperature, 30min).