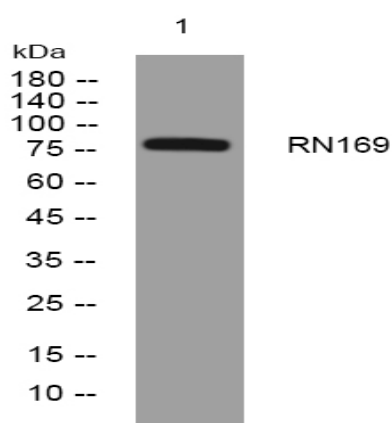


RN169 rabbit pAb

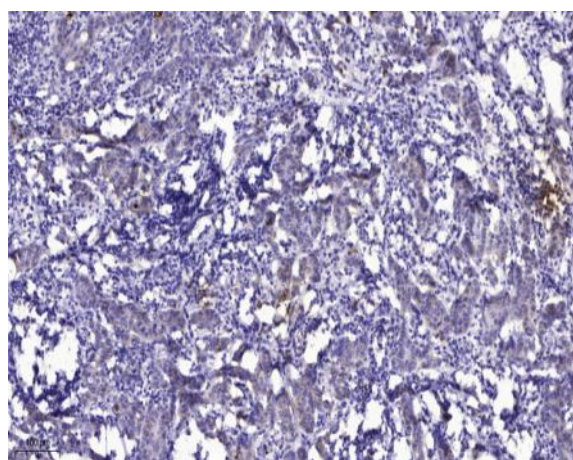
Catalog No :	YT7117
Reactivity :	Human;Mouse
Applications :	WB;ELISA;IHC
Target :	RN169
Gene Name :	RNF169 KIAA1991
Protein Name :	RN169
Human Gene Id :	254225
Human Swiss Prot No :	Q8NCN4
Mouse Gene Id :	108937
Mouse Swiss Prot No :	E9Q7F2
Immunogen :	Synthesized peptide derived from human RN169 AA range: 123-173
Specificity :	This antibody detects endogenous levels of RN169 at Human/Mouse
Formulation :	Liquid in PBS containing 50% glycerol, 0.5% BSA and 0.02% sodium azide.
Source :	Polyclonal, Rabbit,IgG
Dilution :	WB 1:500-2000;IHC 1:50-300; ELISA 2000-20000
Purification :	The antibody was affinity-purified from rabbit antiserum by affinity-chromatography using epitope-specific immunogen.
Concentration :	1 mg/ml
Storage Stability :	-15°C to -25°C/1 year(Do not lower than -25°C)

Molecularweight :	78kD
Function :	similarity:Contains 1 RING-type zinc finger.,
Subcellular Location :	Chromosome . Nucleus, nucleoplasm . Localizes to sites of double-strand breaks (DSBs) following DNA damage. Recruited to DSBs via recognition of RNF168-dependent ubiquitin products. .
Sort :	14547
No4 :	1
Host :	Rabbit
Modifications :	Unmodified

Products Images



Western blot analysis of lysates from MCF-7 cells, primary antibody was diluted at 1:1000, 4° over night



Immunohistochemical analysis of paraffin-embedded human Breast cancer. 1, Antibody was diluted at 1:200(4° overnight). 2, Tris-EDTA,pH9.0 was used for antigen retrieval. 3,Secondary antibody was diluted at 1:200(room temperature, 45min).