

SRGP1 rabbit pAb

Catalog No :	YT7116
Reactivity :	Human;Mouse
Applications :	WB
Target :	SRGP1
Fields :	>>Axon guidance
Gene Name :	SRGAP1 ARHGAP13 KIAA1304
Protein Name :	SRGP1
Human Gene Id :	57522
Human Swiss Prot No :	Q7Z6B7
Mouse Gene Id :	117600
Mouse Swiss Prot No :	Q91Z69
Immunogen :	Synthesized peptide derived from human SRGP1 AA range: 159-209
Specificity :	This antibody detects endogenous levels of SRGP1 at Human/Mouse
Formulation :	Liquid in PBS containing 50% glycerol, 0.5% BSA and 0.02% sodium azide.
Source :	Polyclonal, Rabbit,IgG
Dilution :	WB 1[?]500-2000
Purification :	The antibody was affinity-purified from rabbit antiserum by affinity-chromatography using epitope-specific immunogen.
Concentration :	1 mg/ml

Storage Stability : -15°C to -25°C/1 year(Do not lower than -25°C)

Molecularweight : 119kD

Background : The protein encoded by this gene is a GTPase activator, working with the GTPase CDC42 to negatively regulate neuronal migration. The encoded protein interacts with the transmembrane receptor ROBO1 to inactivate CDC42. [provided by RefSeq, Sep 2016],

Function : function:GTPase-activating protein for RhoA and Cdc42 small GTPases. Together with CDC42 seems to be involved in the pathway mediating the repulsive signaling of Robo and Slit proteins in neuronal migration. SLIT2, probably through interaction with ROBO1, increases the interaction of SRGAP1 with ROBO1 and inactivates CDC42.,sequence caution:Intron retention.,similarity:Contains 1 FCH domain.,similarity:Contains 1 Rho-GAP domain.,similarity:Contains 1 SH3 domain.,subunit:Interacts with ROBO1, CDC42 and RHOA.,tissue specificity:Expressed in brain, lung, kidney, and testis.,

Subcellular Location : cytoplasm,cytosol,

Expression : Expressed in brain, lung, kidney, and testis.

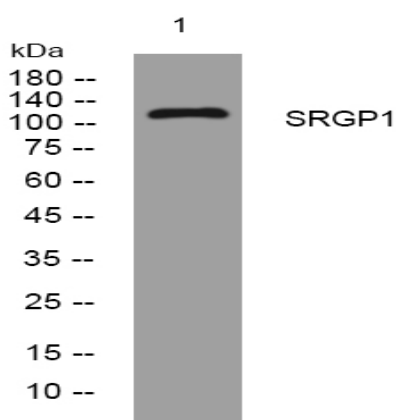
Sort : 16614

No4 : 1

Host : Rabbit

Modifications : Unmodified

Products Images



Western blot analysis of lysates from U2OS cells, primary antibody was diluted at 1:1000, 4° over night