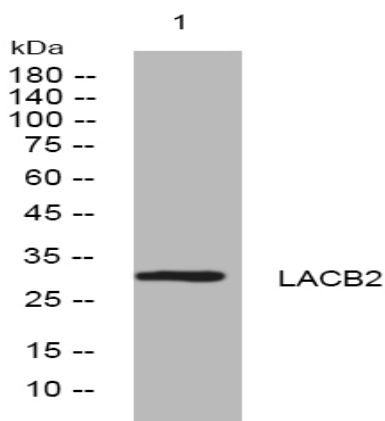


LACB2 rabbit pAb

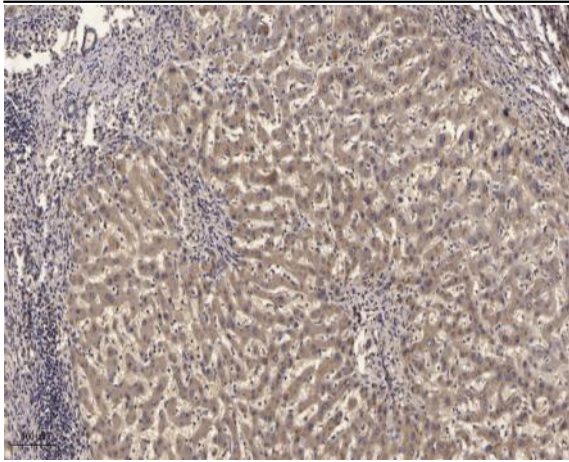
Catalog No :	YT7115
Reactivity :	Human;Mouse;Rat
Applications :	WB;ELISA;IHC
Target :	LACB2
Gene Name :	LACTB2 CGI-83
Protein Name :	LACB2
Human Gene Id :	51110
Human Swiss Prot No :	Q53H82
Mouse Gene Id :	212442
Mouse Swiss Prot No :	Q99KR3
Rat Gene Id :	297768
Rat Swiss Prot No :	Q561R9
Immunogen :	Synthesized peptide derived from human LACB2 AA range: 19-69
Specificity :	This antibody detects endogenous levels of LACB2 at Human/Mouse/Rat
Formulation :	Liquid in PBS containing 50% glycerol, 0.5% BSA and 0.02% sodium azide.
Source :	Polyclonal, Rabbit,IgG
Dilution :	WB 1:500-2000;IHC 1:50-300; ELISA 2000-20000
Purification :	The antibody was affinity-purified from rabbit antiserum by affinity-chromatography using epitope-specific immunogen.

Concentration :	1 mg/ml
Storage Stability :	-15°C to -25°C/1 year(Do not lower than -25°C)
Molecularweight :	32kD
Function :	similarity:Belongs to the metallo-beta-lactamase superfamily. Glyoxalase II family.,
Subcellular Location :	Mitochondrion matrix .
Sort :	9077
No4 :	1
Host :	Rabbit
Modifications :	Unmodified

Products Images



Western blot analysis of lysates from 293T cells, primary antibody was diluted at 1:1000, 4° over night



Immunohistochemical analysis of paraffin-embedded human liver cancer. 1, Antibody was diluted at 1:200(4° overnight). 2, Tris-EDTA,pH9.0 was used for antigen retrieval. 3,Secondary antibody was diluted at 1:200(room temperature, 45min).