

## FPGT rabbit pAb

<b>Catalog No :</b>	YT7112
<b>Reactivity :</b>	Human;Mouse
<b>Applications :</b>	WB
<b>Target :</b>	FPGT
<b>Fields :</b>	>>Fructose and mannose metabolism;>>Amino sugar and nucleotide sugar metabolism;>>Metabolic pathways;>>Biosynthesis of nucleotide sugars
<b>Gene Name :</b>	FPGT GFPP
<b>Protein Name :</b>	FPGT
<b>Human Gene Id :</b>	8790
<b>Human Swiss Prot No :</b>	O14772
<b>Immunogen :</b>	Synthesized peptide derived from human FPGT AA range: 497-547
<b>Specificity :</b>	This antibody detects endogenous levels of FPGT at Human
<b>Formulation :</b>	Liquid in PBS containing 50% glycerol, 0.5% BSA and 0.02% sodium azide.
<b>Source :</b>	Polyclonal, Rabbit,IgG
<b>Dilution :</b>	WB 1[?]500-2000
<b>Purification :</b>	The antibody was affinity-purified from rabbit antiserum by affinity-chromatography using epitope-specific immunogen.
<b>Concentration :</b>	1 mg/ml
<b>Storage Stability :</b>	-15°C to -25°C/1 year(Do not lower than -25°C)
<b>Molecularweight :</b>	65kD

**Background :** L-fucose is a key sugar in glycoproteins and other complex carbohydrates since it may be involved in many of the functional roles of these macromolecules, such as in cell-cell recognition. The fucosyl donor for these fucosylated oligosaccharides is GDP-beta-L-fucose. There are two alternate pathways for the biosynthesis of GDP-fucose; the major pathway converts GDP-alpha-D-mannose to GDP-beta-L-fucose. The protein encoded by this gene participates in an alternate pathway that is present in certain mammalian tissues, such as liver and kidney, and appears to function as a salvage pathway to reutilize L-fucose arising from the turnover of glycoproteins and glycolipids. This pathway involves the phosphorylation of L-fucose to form beta-L-fucose-1-phosphate, and then condensation of the beta-L-fucose-1-phosphate with GTP by fucose-1-phosphate guanylyltransferase to form GDP-beta-L-fucose. Alternative splicing results in multiple transcript variants. Read-through transcription also exists between this gene and the neighboring downstream TNNI3 interacting kinase (TNNI3K) gene. [provided by RefSeq, Dec 2010],

**Function :** catalytic activity:ATP + a protein = ADP + a phosphoprotein.,catalytic activity:GTP + beta-L-fucose 1-phosphate = diphosphate + GDP-L-fucose.,cofactor:Magnesium.,function:Catalyzes the formation of GDP-L-fucose from GTP and L-fucose-1-phosphate. Functions as a salvage pathway to reutilize L-fucose arising from the turnover of glycoproteins and glycolipids.,function:May play a role in cardiac physiology.,PTM:Autophosphorylated.,similarity:Belongs to the protein kinase superfamily. TKL Ser/Thr protein kinase family. MAP kinase kinase kinase subfamily.,similarity:Contains 1 protein kinase domain.,similarity:Contains 10 ANK repeats.,subcellular location:Expressed at lower levels in the cytoplasm.,subunit:Interacts with TNNI3, ACTC, ACTA1, MYBPC3, AIP, BABP3 and HADHB.,tissue specificity:Expressed in many tissues.,tissue specificity:Highly expressed in both adult and fetal heart.,

**Subcellular Location :** Cytoplasm.

**Expression :** Expressed in many tissues.

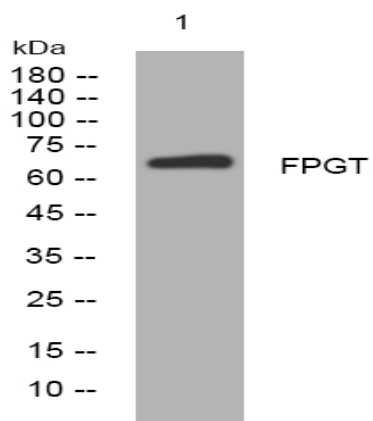
**Sort :** 6279

**No4 :** 1

**Host :** Rabbit

**Modifications :** Unmodified

## Products Images



Western blot analysis of lysates from U2OS cells, primary antibody was diluted at 1:1000, 4° over night