

IGLL5 rabbit pAb

Catalog No :	YT7110
Reactivity :	Human
Applications :	WB
Target :	IGLL5
Gene Name :	IGLL5
Protein Name :	IGLL5
Human Gene Id :	100423062
Human Swiss Prot No :	B9A064
Immunogen :	Synthesized peptide derived from human IGLL5 AA range: 50-100
Specificity :	This antibody detects endogenous levels of IGLL5 at Human
Formulation :	Liquid in PBS containing 50% glycerol, 0.5% BSA and 0.02% sodium azide.
Source :	Polyclonal, Rabbit,IgG
Dilution :	WB 1:500-2000
Purification :	The antibody was affinity-purified from rabbit antiserum by affinity-chromatography using epitope-specific immunogen.
Concentration :	1 mg/ml
Storage Stability :	-15°C to -25°C/1 year(Do not lower than -25°C)
Molecularweight :	24kD
Background :	This gene encodes one of the immunoglobulin lambda-like polypeptides. It is located within the immunoglobulin lambda locus but it does not require somatic rearrangement for expression. The first exon of this gene is unrelated to

immunoglobulin variable genes; the second and third exons are the immunoglobulin lambda joining 1 and the immunoglobulin lambda constant 1 gene segments. Alternative splicing results in multiple transcript variants. [provided by RefSeq, May 2010],

Subcellular Location :

Secreted .

Expression :

Contrary to IGLL1, not expressed in pre-B-cells.

Sort :

8374

No4 :

1

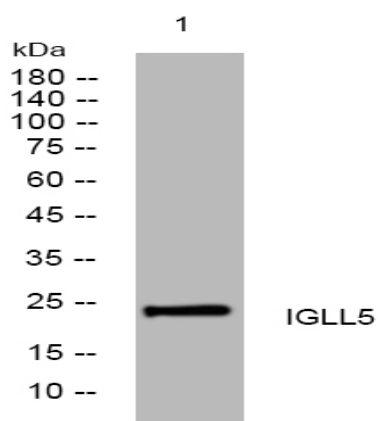
Host :

Rabbit

Modifications :

Unmodified

Products Images



Western blot analysis of lysates from HCT116 cells, primary antibody was diluted at 1:1000, 4° over night