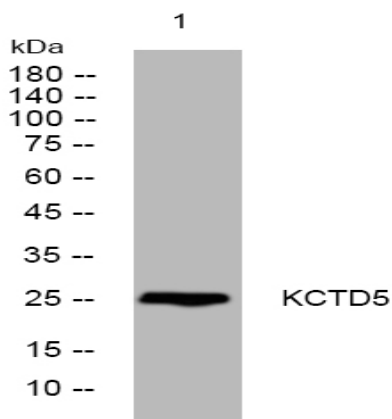


KCTD5 rabbit pAb

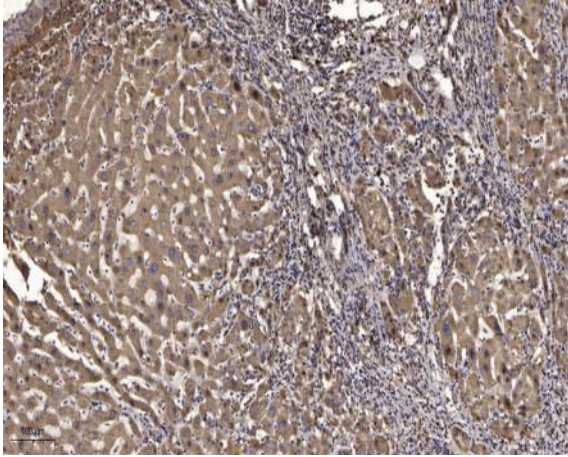
Catalog No :	YT7108
Reactivity :	Human;Mouse;Rat
Applications :	WB;ELISA;IHC
Target :	KCTD5
Gene Name :	KCTD5
Protein Name :	KCTD5
Human Gene Id :	54442
Human Swiss Prot No :	Q9NXV2
Mouse Gene Id :	69259
Mouse Swiss Prot No :	Q8VC57
Rat Gene Id :	287109
Rat Swiss Prot No :	B5DEL1
Immunogen :	Synthesized peptide derived from human KCTD5 AA range: 170-220
Specificity :	This antibody detects endogenous levels of KCTD5 at Human/Mouse/Rat
Formulation :	Liquid in PBS containing 50% glycerol, 0.5% BSA and 0.02% sodium azide.
Source :	Polyclonal, Rabbit,IgG
Dilution :	WB 1:500-2000;IHC 1:50-300; ELISA 2000-20000
Purification :	The antibody was affinity-purified from rabbit antiserum by affinity-chromatography using epitope-specific immunogen.

Concentration :	1 mg/ml
Storage Stability :	-15°C to -25°C/1 year(Do not lower than -25°C)
Molecularweight :	26kD
Function :	similarity:Contains 1 BTB (POZ) domain.,subcellular location:Predominantly cytoplasmic, translocated to the nucleus upon interaction with Rep proteins.,subunit:Interacts with adeno-associated virus 2 REP proteins.,
Subcellular Location :	Cytoplasm, cytosol . Cytoplasm . Nucleus. Predominantly cytoplasmic, translocated to the nucleus upon interaction with Rep proteins. .
Sort :	8873
No4 :	1
Host :	Rabbit
Modifications :	Unmodified

Products Images



Western blot analysis of lysates from DU145 cells, primary antibody was diluted at 1:1000, 4° over night



Immunohistochemical analysis of paraffin-embedded human liver cancer. 1, Antibody was diluted at 1:200(4° overnight). 2, Tris-EDTA,pH9.0 was used for antigen retrieval. 3,Secondary antibody was diluted at 1:200(room temperature, 45min).