

## KBP rabbit pAb

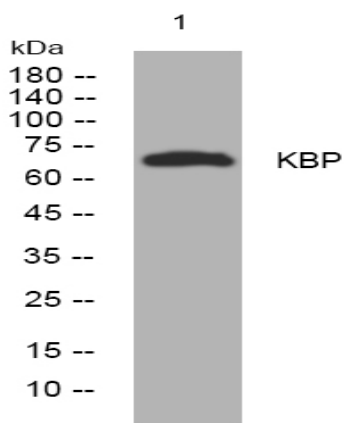
<b>Catalog No :</b>	YT7104
<b>Reactivity :</b>	Human;Mouse;Rat
<b>Applications :</b>	WB;IHC
<b>Target :</b>	KBP
<b>Gene Name :</b>	KIAA1279 KBP
<b>Protein Name :</b>	KBP
<b>Human Gene Id :</b>	26128
<b>Human Swiss Prot No :</b>	Q96EK5
<b>Mouse Gene Id :</b>	72320
<b>Mouse Swiss Prot No :</b>	Q6ZPU9
<b>Rat Gene Id :</b>	606294
<b>Rat Swiss Prot No :</b>	Q4G074
<b>Immunogen :</b>	Synthesized peptide derived from human KBP AA range: 542-592
<b>Specificity :</b>	This antibody detects endogenous levels of KBP at Human/Mouse/Rat
<b>Formulation :</b>	Liquid in PBS containing 50% glycerol, 0.5% BSA and 0.02% sodium azide.
<b>Source :</b>	Polyclonal, Rabbit,IgG
<b>Dilution :</b>	WB 1:500-2000;IHC 1:50-300
<b>Purification :</b>	The antibody was affinity-purified from rabbit antiserum by affinity-chromatography using epitope-specific immunogen.

---

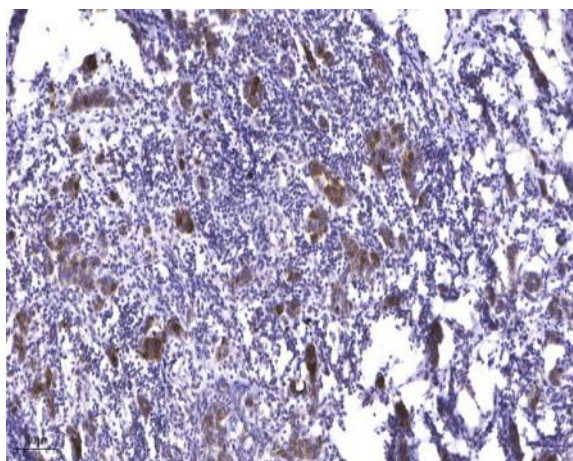
<b>Concentration :</b>	1 mg/ml
<b>Storage Stability :</b>	-15°C to -25°C/1 year(Do not lower than -25°C)
<b>Molecularweight :</b>	68kD
<b>Background :</b>	This gene encodes a kinesin family member 1 binding protein that is characterized by two tetratricopeptide repeats. The encoded protein localizes to the mitochondria and may be involved in regulating transport of the mitochondria. Mutations in this gene are associated with Goldberg-Shprintzen megacolon syndrome. [provided by RefSeq, Mar 2010],
<b>Function :</b>	disease:Defects in KIAA1279 are the cause of Goldberg-Shprintzen megacolon syndrome (GOSHS) [MIM:609460]. GOSHS is characterized by microcephaly, mental retardation and facial dysmorphism, as well as phenotypes related to Hirschsprung disease syndrome.,function:Required for organization of axonal microtubules, and axonal outgrowth and maintenance during peripheral and central nervous system development. Regulates mitochondrial transport by modulating KIF1B motor activity.,similarity:Belongs to the KIF1-binding protein family.,subunit:Interacts with KIF1B.,tissue specificity:Highly expressed in heart, brain, ovary, testis, spinal cord and all specific brain regions examined. Moderate expressed at intermediate level in all other adult tissues examined, as well as in fetal liver and brain. Not expressed in blood leukocytes.,
<b>Subcellular Location :</b>	Cytoplasm, cytoskeleton .
<b>Expression :</b>	Highly expressed in heart, brain, ovary, testis, spinal cord and all specific brain regions examined. Moderate expressed at intermediate level in all other adult tissues examined, as well as in fetal liver and brain. Not expressed in blood leukocytes.
<b>Sort :</b>	8842
<b>No4 :</b>	1
<b>Host :</b>	Rabbit
<b>Modifications :</b>	Unmodified

---

## Products Images



Western blot analysis of lysates from Jurkat cells, primary antibody was diluted at 1:1000, 4° over night



Immunohistochemical analysis of paraffin-embedded human Breast cancer. 1, Antibody was diluted at 1:200(4° overnight). 2, Tris-EDTA,pH9.0 was used for antigen retrieval. 3,Secondary antibody was diluted at 1:200(room temperature, 45min).