

**GAGB1 rabbit pAb**

<b>Catalog No :</b>	YT7100
<b>Reactivity :</b>	Human
<b>Applications :</b>	WB
<b>Target :</b>	GAGB1
<b>Gene Name :</b>	PAGE1 GAGE9 GAGEB1
<b>Protein Name :</b>	GAGB1
<b>Human Gene Id :</b>	8712
<b>Human Swiss Prot No :</b>	O75459
<b>Immunogen :</b>	Synthesized peptide derived from human GAGB1 AA range: 28-78
<b>Specificity :</b>	This antibody detects endogenous levels of GAGB1 at Human
<b>Formulation :</b>	Liquid in PBS containing 50% glycerol, 0.5% BSA and 0.02% sodium azide.
<b>Source :</b>	Polyclonal, Rabbit,IgG
<b>Dilution :</b>	WB 1:500-2000
<b>Purification :</b>	The antibody was affinity-purified from rabbit antiserum by affinity-chromatography using epitope-specific immunogen.
<b>Concentration :</b>	1 mg/ml
<b>Storage Stability :</b>	-15 °C to -25 °C/1 year(Do not lower than -25 °C)
<b>Molecularweight :</b>	16kD
<b>Background :</b>	This gene belongs to a family of genes that are expressed in a variety of tumors but not in normal tissues, except for the testis. Unlike the other gene family members, this gene does not encode an antigenic peptide. Nothing is presently

known about the function of this protein. [provided by RefSeq, Jul 2008],

**Function :** function:Unknown.,similarity:Belongs to the GAGE family.,tissue specificity:Isolated from prostate cancer cell lines; expression associated with progression to androgen insensitive phenotype. Expressed in normal testis and at lower level in normal placenta.,

**Expression :** Isolated from prostate cancer cell lines; expression associated with progression to androgen insensitive phenotype. Expressed in normal testis and at lower level in normal placenta.

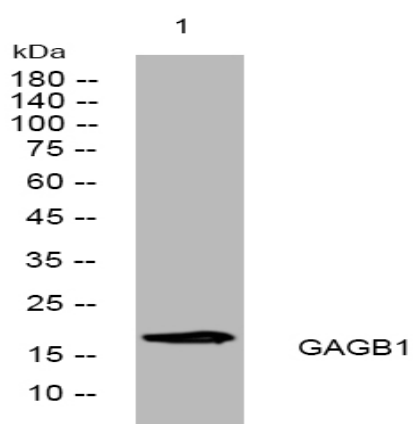
**Sort :** 6393

**No4 :** 1

**Host :** Rabbit

**Modifications :** Unmodified

## Products Images



Western blot analysis of lysates from CACO2 cells, primary antibody was diluted at 1:1000, 4° over night