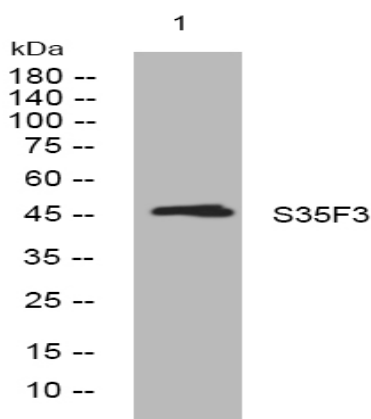


S35F3 rabbit pAb

Catalog No :	YT7099
Reactivity :	Human;Mouse
Applications :	WB
Target :	S35F3
Gene Name :	SLC35F3
Protein Name :	S35F3
Human Gene Id :	148641
Human Swiss Prot No :	Q8IY50
Mouse Gene Id :	210027
Mouse Swiss Prot No :	Q1LZI2
Immunogen :	Synthesized peptide derived from human S35F3 AA range: 305-355
Specificity :	This antibody detects endogenous levels of S35F3 at Human/Mouse
Formulation :	Liquid in PBS containing 50% glycerol, 0.5% BSA and 0.02% sodium azide.
Source :	Polyclonal, Rabbit,IgG
Dilution :	WB 1[?]500-2000
Purification :	The antibody was affinity-purified from rabbit antiserum by affinity-chromatography using epitope-specific immunogen.
Concentration :	1 mg/ml
Storage Stability :	-15°C to -25°C/1 year(Do not lower than -25°C)

Molecularweight :	46kD
Function :	function:Putative solute transporter .,similarity:Belongs to the SLC35F solute transporter family.,
Subcellular Location :	Membrane ; Multi-pass membrane protein .
Sort :	14732
No4 :	1
Host :	Rabbit
Modifications :	Unmodified

Products Images



Western blot analysis of lysates from AD293 cells, primary antibody was diluted at 1:1000, 4° over night