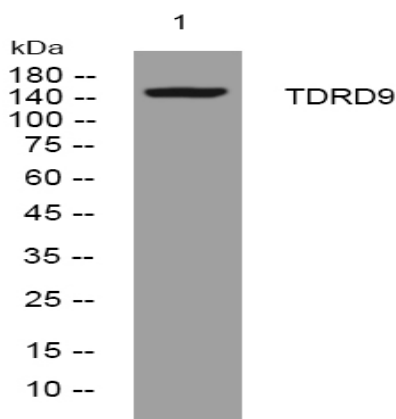


## TDRD9 rabbit pAb

<b>Catalog No :</b>	YT7098
<b>Reactivity :</b>	Human;Mouse;Rat
<b>Applications :</b>	WB
<b>Target :</b>	TDRD9
<b>Gene Name :</b>	TDRD9 C14orf75
<b>Protein Name :</b>	TDRD9
<b>Human Gene Id :</b>	122402
<b>Human Swiss Prot No :</b>	Q8NDG6
<b>Mouse Gene Id :</b>	74691
<b>Mouse Swiss Prot No :</b>	Q14BI7
<b>Rat Gene Id :</b>	299343
<b>Rat Swiss Prot No :</b>	Q3MHU3
<b>Immunogen :</b>	Synthesized peptide derived from human TDRD9 AA range: 335-385
<b>Specificity :</b>	This antibody detects endogenous levels of TDRD9 at Human/Mouse/Rat
<b>Formulation :</b>	Liquid in PBS containing 50% glycerol, 0.5% BSA and 0.02% sodium azide.
<b>Source :</b>	Polyclonal, Rabbit,IgG
<b>Dilution :</b>	WB 1:500-2000
<b>Purification :</b>	The antibody was affinity-purified from rabbit antiserum by affinity-chromatography using epitope-specific immunogen.

<b>Concentration :</b>	1 mg/ml
<b>Storage Stability :</b>	-15°C to -25°C/1 year(Do not lower than -25°C)
<b>Molecularweight :</b>	152kD
<b>Function :</b>	similarity:Contains 1 helicase ATP-binding domain.,similarity:Contains 1 helicase C-terminal domain.,
<b>Subcellular Location :</b>	Cytoplasm . Nucleus . Component of the nuage, also named P granule, a germ-cell-specific organelle required to repress transposon activity during meiosis. Specifically localizes to piP-bodies, a subset of the nuage which contains secondary piRNAs. PIWIL2 is required for its localization to piP-bodies. .
<b>Sort :</b>	17020
<b>No4 :</b>	1
<b>Host :</b>	Rabbit
<b>Modifications :</b>	Unmodified

## Products Images



Western blot analysis of lysates from HpeG2 cells, primary antibody was diluted at 1:1000, 4° over night