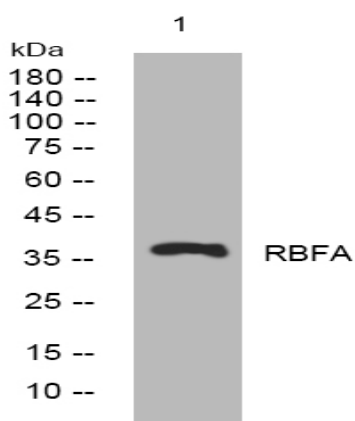


RBFA rabbit pAb

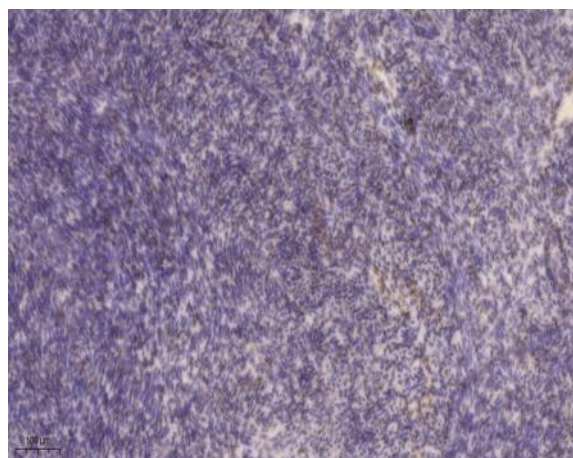
Catalog No :	YT7097
Reactivity :	Human;Mouse
Applications :	WB;IHC
Target :	RBFA
Gene Name :	RBFA C18orf22
Protein Name :	RBFA
Human Gene Id :	79863
Human Swiss Prot No :	Q8N0V3
Mouse Gene Id :	68731
Mouse Swiss Prot No :	Q6P3B9
Immunogen :	Synthesized peptide derived from human RBFA AA range: 286-336
Specificity :	This antibody detects endogenous levels of RBFA at Human/Mouse
Formulation :	Liquid in PBS containing 50% glycerol, 0.5% BSA and 0.02% sodium azide.
Source :	Polyclonal, Rabbit,IgG
Dilution :	WB 1:500-2000;IHC 1:50-300
Purification :	The antibody was affinity-purified from rabbit antiserum by affinity-chromatography using epitope-specific immunogen.
Concentration :	1 mg/ml
Storage Stability :	-15°C to -25°C/1 year(Do not lower than -25°C)

Molecularweight :	38kD
Function :	similarity:Belongs to the rbfA family.,
Subcellular Location :	Mitochondrion .
Sort :	14044
No4 :	1
Host :	Rabbit
Modifications :	Unmodified

Products Images



Western blot analysis of lysates from SW480 cells, primary antibody was diluted at 1:1000, 4° over night



Immunohistochemical analysis of paraffin-embedded human uterus. 1, Antibody was diluted at 1:200(4° overnight). 2, Tris-EDTA,pH9.0 was used for antigen retrieval. 3,Secondary antibody was diluted at 1:200(room temperature, 45min).