

CNOT6 rabbit pAb

Catalog No :	YT7096
Reactivity :	Human;Mouse;Rat
Applications :	WB
Target :	CNOT6
Fields :	>>RNA degradation
Gene Name :	CNOT6 CCR4 KIAA1194
Protein Name :	CNOT6
Human Gene Id :	57472
Human Swiss Prot No :	Q9ULM6
Mouse Gene Id :	104625
Mouse Swiss Prot No :	Q8K3P5
Rat Gene Id :	287249
Rat Swiss Prot No :	Q6AXU9
Immunogen :	Synthesized peptide derived from human CNOT6 AA range: 293-343
Specificity :	This antibody detects endogenous levels of CNOT6 at Human/Mouse/Rat
Formulation :	Liquid in PBS containing 50% glycerol, 0.5% BSA and 0.02% sodium azide.
Source :	Polyclonal, Rabbit,IgG
Dilution :	WB 1[?]500-2000
Purification :	The antibody was affinity-purified from rabbit antiserum by affinity-

chromatography using epitope-specific immunogen.

Concentration : 1 mg/ml

Storage Stability : -15°C to -25°C/1 year(Do not lower than -25°C)

Molecularweight : 61kD

Background : This gene encodes the catalytic component of the CCR4-NOT core transcriptional regulation complex. The encoded protein has a 3'-5' RNase activity and prefers polyadenylated substrates. The CCR4-NOT complex plays a role in many cellular processes, including miRNA-mediated repression, mRNA degradation, and transcriptional regulation. [provided by RefSeq, Dec 2014],

Function : cofactor:Magnesium.,function:Poly(A) nuclease involved in mRNA decay mediated by the major-protein-coding determinant of instability (mCRD) of the FOS gene in the cytoplasm. Has 3'-5' RNase activity. The CCR4-NOT complex functions as general transcription regulation complex.,similarity:Belongs to the CCR4/nocturin family.,similarity:Contains 3 LRR (leucine-rich) repeats.,subunit:Subunit of the CCR4-NOT core complex that contains CHAF1A, CHAF1B, CNOT1, CNOT2, CNOT3, CNOT4, CNOT6 and CNOT8. Interacts with UNR.,

Subcellular Location : Cytoplasm . Nucleus . Predominantly cytoplasmic. .

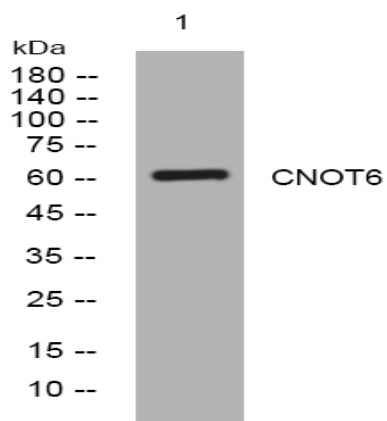
Sort : 4346

No4 : 1

Host : Rabbit

Modifications : Unmodified

Products Images



Western blot analysis of lysates from U2OS cells, primary antibody was diluted at 1:1000, 4° over night