

## TC1D4 rabbit pAb

<b>Catalog No :</b>	YT7092
<b>Reactivity :</b>	Human;Mouse
<b>Applications :</b>	WB
<b>Target :</b>	TC1D4
<b>Gene Name :</b>	TCTEX1D4
<b>Protein Name :</b>	TC1D4
<b>Human Gene Id :</b>	343521
<b>Human Swiss Prot No :</b>	Q5JR98
<b>Mouse Gene Id :</b>	242646
<b>Mouse Swiss Prot No :</b>	Q8CDY7
<b>Immunogen :</b>	Synthesized peptide derived from human TC1D4 AA range: 43-93
<b>Specificity :</b>	This antibody detects endogenous levels of TC1D4 at Human/Mouse
<b>Formulation :</b>	Liquid in PBS containing 50% glycerol, 0.5% BSA and 0.02% sodium azide.
<b>Source :</b>	Polyclonal, Rabbit,IgG
<b>Dilution :</b>	WB 1:500-2000
<b>Purification :</b>	The antibody was affinity-purified from rabbit antiserum by affinity-chromatography using epitope-specific immunogen.
<b>Concentration :</b>	1 mg/ml
<b>Storage Stability :</b>	-15°C to -25°C/1 year(Do not lower than -25°C)

**Molecularweight :** 24kD

**Function :** similarity:Belongs to the dynein light chain Tctex-type family.,subunit:Interacts with ENG/endoglin, TGFBR2 and TGFBR3.,tissue specificity:Ubiquitously expressed.,

**Subcellular Location :** Cell projection, cilium, flagellum . Cytoplasmic vesicle, secretory vesicle, acrosome . Cytoplasm, cytoskeleton, cilium axoneme . Cytoplasm . Nucleus . Cytoplasm, cytoskeleton, microtubule organizing center . Present along the entire length of the flagellum, including principal and endpiece, and more predominantly in the midpiece region. .

**Expression :** Ubiquitously expressed (PubMed:16982625). Expressed in testis (at protein level) (PubMed:23789093).

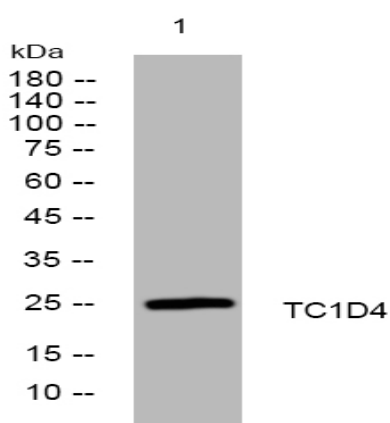
**Sort :** 16983

**No4 :** 1

**Host :** Rabbit

**Modifications :** Unmodified

## Products Images



Western blot analysis of lysates from MCF-7 cells, primary antibody was diluted at 1:1000, 4° over night