

## RIP rabbit pAb

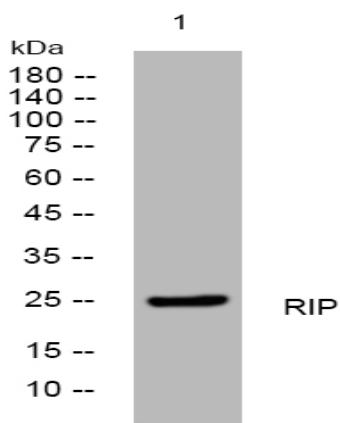
<b>Catalog No :</b>	YT7091
<b>Reactivity :</b>	Human;Mouse;Rat
<b>Applications :</b>	WB;ELISA;IHC
<b>Target :</b>	RIP
<b>Gene Name :</b>	RPAIN RIP
<b>Protein Name :</b>	RIP
<b>Human Gene Id :</b>	84268
<b>Human Swiss Prot No :</b>	Q86UA6
<b>Mouse Gene Id :</b>	69723
<b>Mouse Swiss Prot No :</b>	Q9CWFY9
<b>Rat Gene Id :</b>	287463
<b>Rat Swiss Prot No :</b>	Q4G2Y1
<b>Immunogen :</b>	Synthesized peptide derived from human RIP AA range: 117-167
<b>Specificity :</b>	This antibody detects endogenous levels of RIP at Human/Mouse/Rat
<b>Formulation :</b>	Liquid in PBS containing 50% glycerol, 0.5% BSA and 0.02% sodium azide.
<b>Source :</b>	Polyclonal, Rabbit,IgG
<b>Dilution :</b>	WB 1:500-2000;IHC 1:50-300; ELISA 2000-20000
<b>Purification :</b>	The antibody was affinity-purified from rabbit antiserum by affinity-chromatography using epitope-specific immunogen.

---

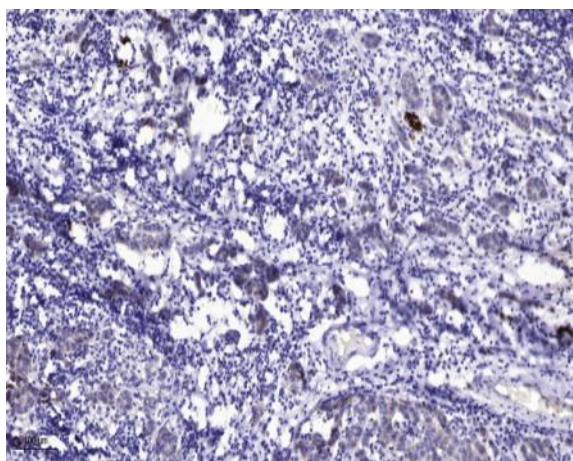
<b>Concentration :</b>	1 mg/ml
<b>Storage Stability :</b>	-15°C to -25°C/1 year(Do not lower than -25°C)
<b>Molecularweight :</b>	24kD
<b>Function :</b>	function:Mediates the import of RPA complex into the nucleus, possibly via some interaction with importin beta. Isoform 2 is sumoylated and mediates the localization of RPA complex into the PML body of the nucleus, thereby participating in RPA function in DNA metabolism.,PTM:Isoform 2 is sumoylated. Sumoylation is required for localization in the nuclear PML body and transport of RPA complex in PML body. Upon UV irradiation and during S phase, it is desumoylated, releasing RPA complex that is translocated to sites of DNA damage. Sumoylation takes place at different Lys residues.,similarity:Contains 1 RIP-type zinc finger.,subcellular location:Only nuclear, localizes to PML body.,subunit:Interacts with the RPA1 subunit of RPA complex.,tissue specificity:Widely expressed. Expressed in pancreas, kidney, muscle, liver, lung, placenta, brain, heart, leukocytes, colon, intestine, ovary, testis
<b>Subcellular Location :</b>	[Isoform 1]: Cytoplasm. Nucleus.; [Isoform 2]: Nucleus, PML body.
<b>Expression :</b>	Widely expressed. Expressed in pancreas, kidney, muscle, liver, lung, placenta, brain, heart, leukocytes, colon, intestine, ovary, testis, prostate, thymus and spleen.
<b>Tag :</b>	hot
<b>Sort :</b>	14526
<b>No4 :</b>	1
<b>Host :</b>	Rabbit
<b>Modifications :</b>	Unmodified

---

## Products Images



Western blot analysis of lysates from Hela cells, primary antibody was diluted at 1:1000, 4° over night



Immunohistochemical analysis of paraffin-embedded human Breast cancer. 1, Antibody was diluted at 1:200(4° overnight). 2, Tris-EDTA,pH9.0 was used for antigen retrieval. 3,Secondary antibody was diluted at 1:200(room temperature, 45min).