

ZFP30 rabbit pAb

Catalog No :	YT7089
Reactivity :	Human;Mouse
Applications :	WB
Target :	ZFP30
Fields :	>>Herpes simplex virus 1 infection
Gene Name :	ZFP30 KIAA0961 ZNF745
Protein Name :	ZFP30
Human Gene Id :	22835
Human Swiss Prot No :	Q9Y2G7
Mouse Gene Id :	22693
Mouse Swiss Prot No :	Q60585
Immunogen :	Synthesized peptide derived from human ZFP30 AA range: 108-158
Specificity :	This antibody detects endogenous levels of ZFP30 at Human/Mouse
Formulation :	Liquid in PBS containing 50% glycerol, 0.5% BSA and 0.02% sodium azide.
Source :	Polyclonal, Rabbit,IgG
Dilution :	WB 1[?]500-2000
Purification :	The antibody was affinity-purified from rabbit antiserum by affinity-chromatography using epitope-specific immunogen.
Concentration :	1 mg/ml

Storage Stability : -15°C to -25°C/1 year(Do not lower than -25°C)

Molecularweight : 57kD

Function : function:May be involved in transcriptional regulation.,similarity:Belongs to the krueppel C2H2-type zinc-finger protein family.,similarity:Contains 1 KRAB domain.,similarity:Contains 13 C2H2-type zinc fingers.,

Subcellular Location : Nucleus .

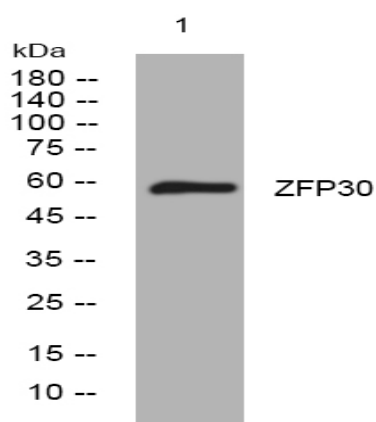
Sort : 24517

No4 : 1

Host : Rabbit

Modifications : Unmodified

Products Images



Western blot analysis of lysates from SW480 cells, primary antibody was diluted at 1:1000, 4° over night