

NELL2 rabbit pAb

Catalog No :	YT7088
Reactivity :	Human;Mouse;Rat
Applications :	WB
Target :	NELL2
Gene Name :	NELL2 NRP2
Protein Name :	NELL2
Human Gene Id :	4753
Human Swiss Prot No :	Q99435
Mouse Swiss Prot No :	Q61220
Rat Swiss Prot No :	Q62918
Immunogen :	Synthesized peptide derived from human NELL2 AA range: 509-559
Specificity :	This antibody detects endogenous levels of NELL2 at Human/Mouse/Rat
Formulation :	Liquid in PBS containing 50% glycerol, 0.5% BSA and 0.02% sodium azide.
Source :	Polyclonal, Rabbit,IgG
Dilution :	WB 1:500-2000
Purification :	The antibody was affinity-purified from rabbit antiserum by affinity-chromatography using epitope-specific immunogen.
Concentration :	1 mg/ml
Storage Stability :	-15°C to -25°C/1 year(Do not lower than -25°C)

Molecularweight : 90kD

Background : The protein encoded by this gene is a glycoprotein containing several von Willebrand factor C domains and epidermal growth factor (EGF)-like domains. The encoded protein acts as a homotrimer and is found in the cytoplasm. Several variants encoding a few different isoforms exist, and at least one isoform appears to be a secreted protein. Studies in mouse suggest that this protein plays a role in neural cell growth and differentiation as well as in oncogenesis. [provided by RefSeq, Feb 2009],

Function : similarity:Contains 1 TSP N-terminal (TSPN) domain.,similarity:Contains 5 VWFC domains.,similarity:Contains 6 EGF-like domains.,subunit:Homotrimer. Binds to PKC beta-1.,

Subcellular Location : Secreted .

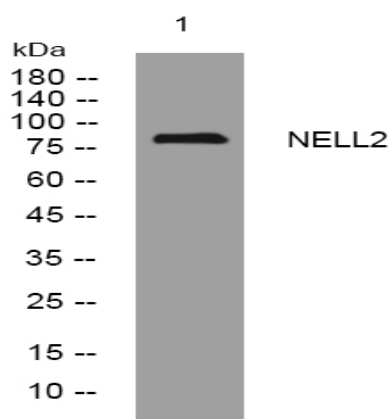
Sort : 10669

No4 : 1

Host : Rabbit

Modifications : Unmodified

Products Images



Western blot analysis of lysates from HeLa cells, primary antibody was diluted at 1:1000, 4° over night