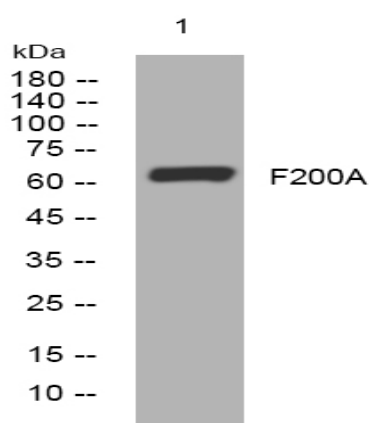


F200A rabbit pAb

Catalog No :	YT7085
Reactivity :	Human
Applications :	WB
Target :	F200A
Gene Name :	FAM200A C7orf38
Protein Name :	F200A
Human Gene Id :	221786
Human Swiss Prot No :	Q8TCP9
Immunogen :	Synthesized peptide derived from human F200A AA range: 358-408
Specificity :	This antibody detects endogenous levels of F200A at Human
Formulation :	Liquid in PBS containing 50% glycerol, 0.5% BSA and 0.02% sodium azide.
Source :	Polyclonal, Rabbit,IgG
Dilution :	WB 1[?]500-2000
Purification :	The antibody was affinity-purified from rabbit antiserum by affinity-chromatography using epitope-specific immunogen.
Concentration :	1 mg/ml
Storage Stability :	-15 °C to -25 °C/1 year(Do not lower than -25 °C)
Molecularweight :	63kD
Background :	This gene encodes a protein of unknown function. The protein is weakly similar to transposase-like proteins in human and mouse. [provided by RefSeq, Jul 2008],

Subcellular Location :	Membrane ; Single-pass membrane protein .
Sort :	5830
No4 :	1
Host :	Rabbit
Modifications :	Unmodified

Products Images



Western blot analysis of lysates from U2OS cells, primary antibody was diluted at 1:1000, 4° over night