

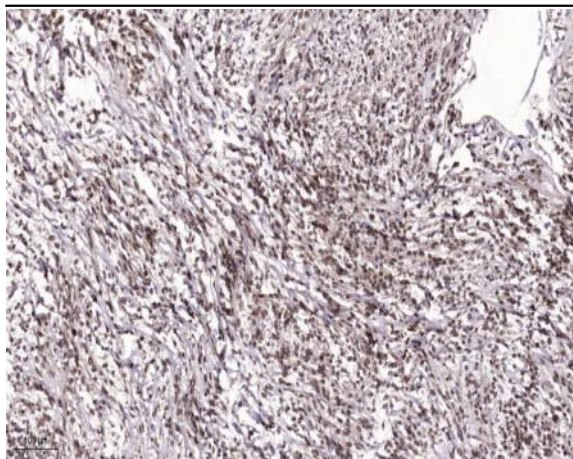
## DPY30 rabbit pAb

<b>Catalog No :</b>	YT7083
<b>Reactivity :</b>	Human;Mouse;Rat
<b>Applications :</b>	IHC;IF
<b>Target :</b>	DPY30
<b>Gene Name :</b>	DPY30
<b>Protein Name :</b>	DPY30
<b>Human Gene Id :</b>	84661
<b>Human Swiss Prot No :</b>	Q9C005
<b>Mouse Gene Id :</b>	66310
<b>Mouse Swiss Prot No :</b>	Q99LT0
<b>Rat Gene Id :</b>	286897
<b>Rat Swiss Prot No :</b>	Q8K3E7
<b>Immunogen :</b>	Synthesized peptide derived from human DPY30 AA range: 39-89
<b>Specificity :</b>	This antibody detects endogenous levels of DPY30 at Human/Mouse/Rat
<b>Formulation :</b>	Liquid in PBS containing 50% glycerol, 0.5% BSA and 0.02% sodium azide.
<b>Source :</b>	Polyclonal, Rabbit,IgG
<b>Dilution :</b>	IHC 1:50-200. IF 1:50-200
<b>Purification :</b>	The antibody was affinity-purified from rabbit antiserum by affinity-chromatography using epitope-specific immunogen.

<b>Concentration :</b>	1 mg/ml
<b>Storage Stability :</b>	-15°C to -25°C/1 year(Do not lower than -25°C)
<b>Molecularweight :</b>	11kD
<b>Background :</b>	This gene encodes an integral core subunit of the SET1/MLL family of H3K4 methyltransferases. The encoded protein directly controls cell cycle regulators and plays an important role in the proliferation and differentiation of human hematopoietic progenitor cells. [provided by RefSeq, Mar 2016],
<b>Function :</b>	similarity:Belongs to the dpy-30 family.,subunit:Component of MLL-containing complexes (named MLL, ASCOM, MLL2/MLL3 or MLL3/MLL4 complex): at least composed ASH2L, RBBP5, DPY30, WDR5, one or several histone methyltransferases (MLL, MLL2, MLL3 and/or MLL4), and the facultative components MEN1, HCFC1, HCFC2, NCOA6, KDM6A, PAXIP1/PTIP and C16orf53/PA1.,
<b>Subcellular Location :</b>	Nucleus . Golgi apparatus, trans-Golgi network . Associated with chromatin at regions enriched in histone H3 trimethylated at 'Lys-4. Highly enriched in gene promoter regions and 5' UTRs, but not in downstream regions of genes or 3' UTRs (By similarity). .
<b>Sort :</b>	5246
<b>No4 :</b>	1
<b>Host :</b>	Rabbit
<b>Modifications :</b>	Unmodified

---

## Products Images



Immunohistochemical analysis of paraffin-embedded human Colon cancer. 1, Antibody was diluted at 1:200(4° overnight). 2, Tris-EDTA,pH9.0 was used for antigen retrieval. 3,Secondary antibody was diluted at 1:200(room temperature, 45min).