

SG196 rabbit pAb

Catalog No :	YT7079
Reactivity :	Human;Mouse;Rat
Applications :	WB;IHC
Target :	SG196
Fields :	>>Mannose type O-glycan biosynthesis;>>Metabolic pathways
Gene Name :	SGK196
Protein Name :	SG196
Human Gene Id :	84197
Human Swiss Prot No :	Q9H5K3
Mouse Gene Id :	74653
Mouse Swiss Prot No :	Q3TUA9
Rat Gene Id :	306549
Rat Swiss Prot No :	Q4V8A9
Immunogen :	Synthesized peptide derived from human SG196 AA range: 178-228
Specificity :	This antibody detects endogenous levels of SG196 at Human/Mouse/Rat
Formulation :	Liquid in PBS containing 50% glycerol, 0.5% BSA and 0.02% sodium azide.
Source :	Polyclonal, Rabbit,IgG
Dilution :	WB 1:500-2000;IHC 1:50-300
Purification :	The antibody was affinity-purified from rabbit antiserum by affinity-

chromatography using epitope-specific immunogen.

Concentration : 1 mg/ml

Storage Stability : -15°C to -25°C/1 year(Do not lower than -25°C)

Molecularweight : 39kD

Background : This gene encodes a protein that may be involved in the presentation of the laminin-binding O-linked carbohydrate chain of alpha-dystroglycan (a-DG), which forms transmembrane linkages between the extracellular matrix and the exoskeleton. Some pathogens use this O-linked carbohydrate unit for host entry. Loss of function compound heterozygous mutations in this gene were found in a human patient affected by the Walker-Warburg syndrome (WWS) phenotype. Mice lacking this gene contain misplaced neurons (heterotopia) in some regions of the brain, possibly from defects in neuronal migration. Alternative splicing of this gene results in multiple transcript variants. [provided by RefSeq, May 2013],

Function : domain:The protein kinase domain is predicted to be catalytically inactive.,similarity:Belongs to the protein kinase superfamily. Ser/Thr protein kinase family. STKL subfamily.,similarity:Contains 1 protein kinase domain.,

Subcellular Location : Endoplasmic reticulum membrane ; Single-pass type II membrane protein .

Expression : Highest expression is observed in brain, skeletal muscle, kidney and heart in fetal and adult tissues.

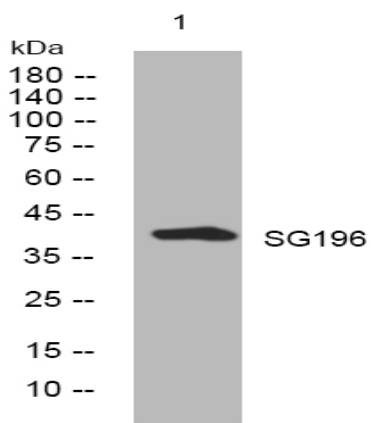
Sort : 16266

No4 : 1

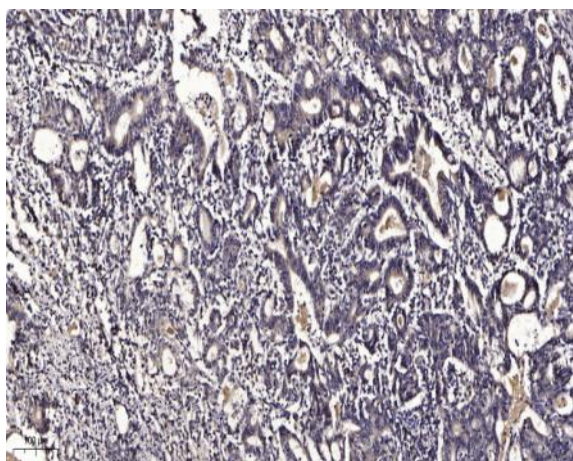
Host : Rabbit

Modifications : Unmodified

Products Images



Western blot analysis of lysates from K562 cells, primary antibody was diluted at 1:1000, 4° over night



Immunohistochemical analysis of paraffin-embedded human Gastric adenocarcinoma. 1, Antibody was diluted at 1:200(4° overnight). 2, Tris-EDTA,pH9.0 was used for antigen retrieval. 3,Secondary antibody was diluted at 1:200(room temperature, 45min).