

IFFO1 rabbit pAb

Catalog No :	YT7077
Reactivity :	Human;Mouse
Applications :	WB
Target :	IFFO1
Gene Name :	IFFO1 IFFO
Protein Name :	IFFO1
Human Gene Id :	25900
Human Swiss Prot No :	Q0D2I5
Mouse Gene Id :	320678
Mouse Swiss Prot No :	Q8BXL9
Immunogen :	Synthesized peptide derived from human IFFO1 AA range: 387-437
Specificity :	This antibody detects endogenous levels of IFFO1 at Human/Mouse
Formulation :	Liquid in PBS containing 50% glycerol, 0.5% BSA and 0.02% sodium azide.
Source :	Polyclonal, Rabbit,IgG
Dilution :	WB 1[?]500-2000
Purification :	The antibody was affinity-purified from rabbit antiserum by affinity-chromatography using epitope-specific immunogen.
Concentration :	1 mg/ml
Storage Stability :	-15°C to -25°C/1 year(Do not lower than -25°C)

Molecularweight : 61kD

Background : This gene is a member of the intermediate filament family. Intermediate filaments are proteins which are primordial components of the cytoskeleton and nuclear envelope. The proteins encoded by the members of this gene family are evolutionarily and structurally related but have limited sequence homology, with the exception of the central rod domain. Multiple alternatively spliced transcript variants encoding different isoforms have been found for this gene. [provided by RefSeq, Jul 2010],

Function : similarity:Belongs to the intermediate filament family.,tissue specificity:Ubiquitously expressed.,

Subcellular Location : Nucleus . Nucleus, nucleoplasm . Nucleus inner membrane . Nucleus matrix . Mainly soluble, the remaining is localized in the nuclear matrix (PubMed:31548606). Localized at double-strand break (DSB) sites near the lamina and nuclear matrix structures (PubMed:31548606) . .

Expression : Ubiquitously expressed.

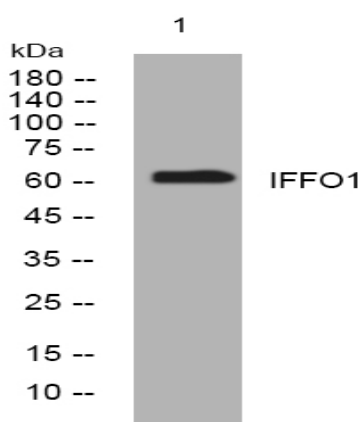
Sort : 8318

No4 : 1

Host : Rabbit

Modifications : Unmodified

Products Images



Western blot analysis of lysates from MCF-7 cells, primary antibody was diluted at 1:1000, 4° over night