

## RUSD1 rabbit pAb

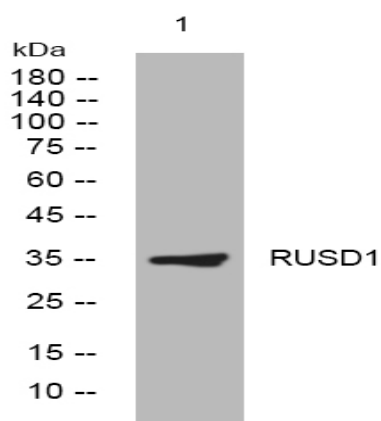
<b>Catalog No :</b>	YT7072
<b>Reactivity :</b>	Human;Mouse
<b>Applications :</b>	WB
<b>Target :</b>	RUSD1
<b>Gene Name :</b>	RPUSD1 C16orf40 RLUCL
<b>Protein Name :</b>	RUSD1
<b>Human Gene Id :</b>	113000
<b>Human Swiss Prot No :</b>	Q9UJJ7
<b>Mouse Gene Id :</b>	106707
<b>Mouse Swiss Prot No :</b>	Q8VCZ8
<b>Immunogen :</b>	Synthesized peptide derived from human RUSD1 AA range: 58-108
<b>Specificity :</b>	This antibody detects endogenous levels of RUSD1 at Human/Mouse
<b>Formulation :</b>	Liquid in PBS containing 50% glycerol, 0.5% BSA and 0.02% sodium azide.
<b>Source :</b>	Polyclonal, Rabbit,IgG
<b>Dilution :</b>	WB 1:500-2000
<b>Purification :</b>	The antibody was affinity-purified from rabbit antiserum by affinity-chromatography using epitope-specific immunogen.
<b>Concentration :</b>	1 mg/ml
<b>Storage Stability :</b>	-15°C to -25°C/1 year(Do not lower than -25°C)

---

<b>Molecularweight :</b>	34kD
<b>Function :</b>	similarity:Belongs to the pseudouridine synthase rluA family.,
<b>Subcellular Location :</b>	mitochondrion,
<b>Sort :</b>	14659
<b>No4 :</b>	1
<b>Host :</b>	Rabbit
<b>Modifications :</b>	Unmodified

---

## Products Images



Western blot analysis of lysates from 3T3 cells, primary antibody was diluted at 1:1000, 4° over night