

## ALG13 rabbit pAb

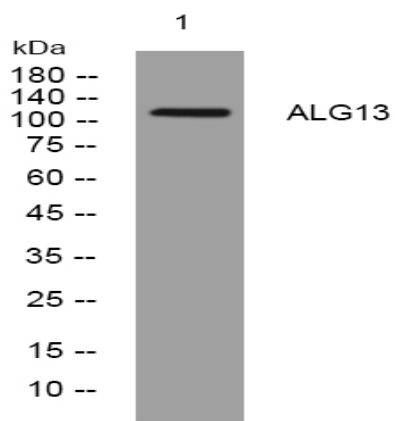
<b>Catalog No :</b>	YT7071
<b>Reactivity :</b>	Human;Mouse;Rat
<b>Applications :</b>	WB
<b>Target :</b>	ALG13
<b>Fields :</b>	>>N-Glycan biosynthesis;>>Various types of N-glycan biosynthesis;>>Metabolic pathways
<b>Gene Name :</b>	ALG13 CXorf45 GLT28D1 MDS031
<b>Protein Name :</b>	ALG13
<b>Human Gene Id :</b>	79868
<b>Human Swiss Prot No :</b>	Q9NP73
<b>Mouse Gene Id :</b>	67574
<b>Mouse Swiss Prot No :</b>	Q9D8C3
<b>Rat Gene Id :</b>	300284
<b>Rat Swiss Prot No :</b>	Q5I0K7
<b>Immunogen :</b>	Synthesized peptide derived from human ALG13 AA range: 69-119
<b>Specificity :</b>	This antibody detects endogenous levels of ALG13 at Human/Mouse/Rat
<b>Formulation :</b>	Liquid in PBS containing 50% glycerol, 0.5% BSA and 0.02% sodium azide.
<b>Source :</b>	Polyclonal, Rabbit,IgG
<b>Dilution :</b>	WB 1:500-2000

---

<b>Purification :</b>	The antibody was affinity-purified from rabbit antiserum by affinity-chromatography using epitope-specific immunogen.
<b>Concentration :</b>	1 mg/ml
<b>Storage Stability :</b>	-15°C to -25°C/1 year(Do not lower than -25°C)
<b>Molecularweight :</b>	125kD
<b>Background :</b>	The protein encoded by this gene is a subunit of a bipartite UDP-N-acetylglucosamine transferase. It heterodimerizes with asparagine-linked glycosylation 14 homolog to form a functional UDP-GlcNAc glycosyltransferase that catalyzes the second sugar addition of the highly conserved oligosaccharide precursor in endoplasmic reticulum N-linked glycosylation. Multiple transcript variants encoding different isoforms have been found for this gene. [provided by RefSeq, Dec 2009],
<b>Function :</b>	catalytic activity:UDP-N-acetyl-D-glucosamine + N-acetyl-D-glucosaminyl-diphosphodolichol = UDP + N,N'-diacetylchitobiosyl-diphosphodolichol.,function:Involved in protein N-glycosylation. Essential for the second step of the dolichol-linked oligosaccharide pathway.,online information:GlycoGene database,similarity:Belongs to the glycosyltransferase 28 family.,subunit:Heterodimer with ALG14 to form a functional enzyme.,
<b>Subcellular Location :</b>	[Isoform 2]: Endoplasmic reticulum . Could be recruited to the cytosolic face of the endoplasmic reticulum membrane through its interaction with ALG14.
<b>Sort :</b>	1899
<b>No4 :</b>	1
<b>Host :</b>	Rabbit
<b>Modifications :</b>	Unmodified

---

## Products Images



Western blot analysis of lysates from A549 cells, primary antibody was diluted at 1:1000, 4° over night