

## KR121 rabbit pAb

|                              |   |
|------------------------------|---|
| <b>Catalog No :</b>          | YT7068  |
| <b>Reactivity :</b>          | Human;Mouse   |
| <b>Applications :</b>        | IHC;IF  |
| <b>Target :</b>              | KR121   |
| <b>Gene Name :</b>           | KRTAP12-1 KAP12.1 KRTAP12.1   |
| <b>Protein Name :</b>        | KR121   |
| <b>Human Gene Id :</b>       | 353332  |
| <b>Human Swiss Prot No :</b> | P59990  |
| <b>Mouse Gene Id :</b>       | 16694   |
| <b>Mouse Swiss Prot No :</b> | Q9Z287  |
| <b>Immunogen :</b>           | Synthesized peptide derived from human KR121 AA range: 22-72  |
| <b>Specificity :</b>         | This antibody detects endogenous levels of KR121 at Human/Mouse   |
| <b>Formulation :</b>         | Liquid in PBS containing 50% glycerol, 0.5% BSA and 0.02% sodium azide.   |
| <b>Source :</b>              | Polyclonal, Rabbit,IgG  |
| <b>Dilution :</b>            | IHC 1:50-200. IF 1:50-200   |
| <b>Purification :</b>        | The antibody was affinity-purified from rabbit antiserum by affinity-chromatography using epitope-specific immunogen. |
| <b>Concentration :</b>       | 1 mg/ml   |
| <b>Storage Stability :</b>   | -15°C to -25°C/1 year(Do not lower than -25°C)  |

---

**Molecularweight :** 11kD

---

**Function :** function:In the hair cortex, hair keratin intermediate filaments are embedded in an interfilamentous matrix, consisting of hair keratin-associated proteins (KRTAP), which are essential for the formation of a rigid and resistant hair shaft through their extensive disulfide bond cross-linking with abundant cysteine residues of hair keratins. The matrix proteins include the high-sulfur and high-glycine-tyrosine keratins.,similarity:Belongs to the KRTAP type 12 family.,subunit:Interacts with hair keratins.,tissue specificity:Restricted to a narrow region of the hair fiber cuticle, lying approximately 20 cell layers above the apex of the dermal papilla of the hair root; not detected in any other tissues.,

---

**Subcellular Location :** keratin filament,

---

**Expression :** Restricted to a narrow region of the hair fiber cuticle, lying approximately 20 cell layers above the apex of the dermal papilla of the hair root; not detected in any other tissues.

---

**Sort :** 8987

---

**No4 :** 1

---

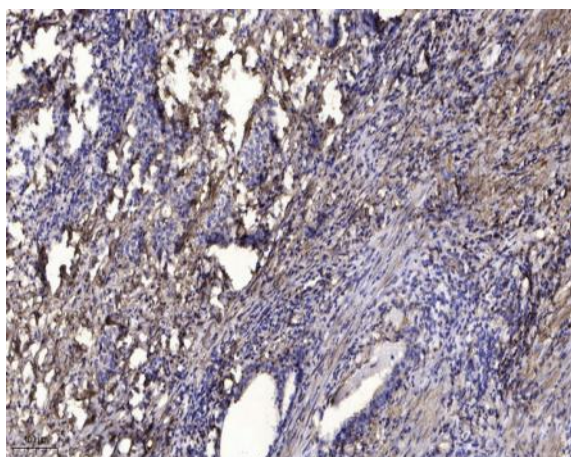
**Host :** Rabbit

---

**Modifications :** Unmodified

---

## Products Images



Immunohistochemical analysis of paraffin-embedded human Gastric adenocarcinoma. 1, Antibody was diluted at 1:200(4° overnight). 2, Tris-EDTA,pH9.0 was used for antigen retrieval. 3,Secondary antibody was diluted at 1:200(room temperature, 45min).