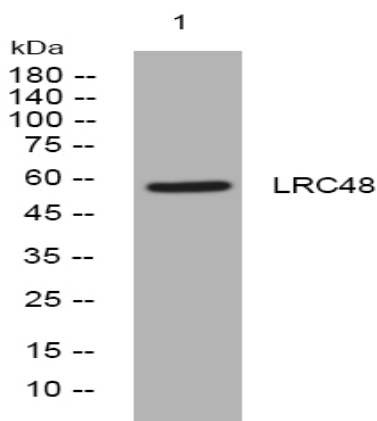


LRC48 rabbit pAb

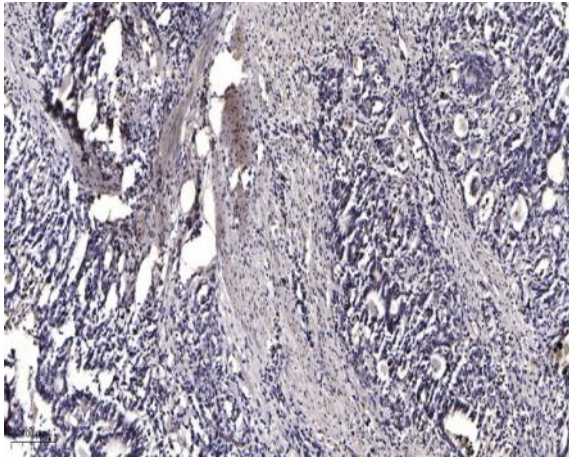
Catalog No :	YT7067
Reactivity :	Human;Mouse;Rat
Applications :	WB;IHC
Target :	LRC48
Gene Name :	LRRC48
Protein Name :	LRC48
Human Gene Id :	83450
Human Swiss Prot No :	Q9H069
Mouse Gene Id :	74665
Mouse Swiss Prot No :	Q9D5E4
Rat Gene Id :	287371
Rat Swiss Prot No :	Q5XI54
Immunogen :	Synthesized peptide derived from human LRC48 AA range: 250-300
Specificity :	This antibody detects endogenous levels of LRC48 at Human/Mouse/Rat
Formulation :	Liquid in PBS containing 50% glycerol, 0.5% BSA and 0.02% sodium azide.
Source :	Polyclonal, Rabbit,IgG
Dilution :	WB 1:500-2000;IHC 1:50-300
Purification :	The antibody was affinity-purified from rabbit antiserum by affinity-chromatography using epitope-specific immunogen.

Concentration :	1 mg/ml
Storage Stability :	-15°C to -25°C/1 year(Do not lower than -25°C)
Molecularweight :	58kD
Function :	similarity:Contains 5 LRR (leucine-rich) repeats.,
Subcellular Location :	Cytoplasm, cytoskeleton, cilium axoneme . Cell projection, cilium . Cytoplasm, cytoskeleton, flagellum axoneme . Cell projection, cilium, flagellum .
Sort :	9242
No4 :	1
Host :	Rabbit
Modifications :	Unmodified

Products Images



Western blot analysis of lysates from HeLa cells, primary antibody was diluted at 1:1000, 4° over night



Immunohistochemical analysis of paraffin-embedded human Gastric adenocarcinoma. 1, Antibody was diluted at 1:200(4° overnight). 2, Tris-EDTA,pH9.0 was used for antigen retrieval. 3,Secondary antibody was diluted at 1:200(room temperature, 45min).