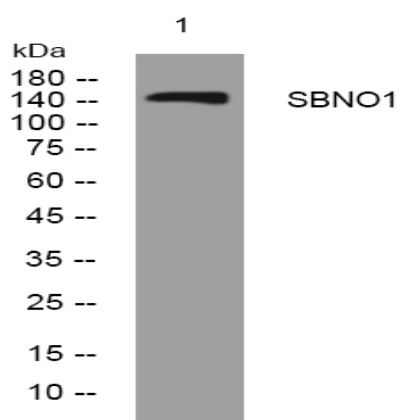


SBNO1 rabbit pAb

Catalog No :	YT7066
Reactivity :	Human;Mouse;Rat
Applications :	WB
Target :	SBNO1
Gene Name :	SBNO1 MOP3
Protein Name :	SBNO1
Human Gene Id :	55206
Human Swiss Prot No :	A3KN83
Mouse Swiss Prot No :	Q689Z5
Rat Swiss Prot No :	Q5BJL5
Immunogen :	Synthesized peptide derived from human SBNO1 AA range: 383-433
Specificity :	This antibody detects endogenous levels of SBNO1 at Human/Mouse/Rat
Formulation :	Liquid in PBS containing 50% glycerol, 0.5% BSA and 0.02% sodium azide.
Source :	Polyclonal, Rabbit,IgG
Dilution :	WB 1:500-2000
Purification :	The antibody was affinity-purified from rabbit antiserum by affinity-chromatography using epitope-specific immunogen.
Concentration :	1 mg/ml
Storage Stability :	-15°C to -25°C/1 year(Do not lower than -25°C)

Molecularweight :	153kD
Function :	similarity:Belongs to the SBNO family.,
Sort :	16164
No4 :	1
Host :	Rabbit
Modifications :	Unmodified

Products Images



Western blot analysis of lysates from Hela cells, primary antibody was diluted at 1:1000, 4 ° over night