

AT134 rabbit pAb

Catalog No :	YT7061
Reactivity :	Human;Mouse
Applications :	WB
Target :	AT134
Gene Name :	ATP13A4 UNQ3052/PRO9871
Protein Name :	AT134
Human Gene Id :	84239
Human Swiss Prot No :	Q4VNC1
Mouse Gene Id :	224079
Mouse Swiss Prot No :	Q5XF90
Immunogen :	Synthesized peptide derived from human AT134 AA range: 719-769
Specificity :	This antibody detects endogenous levels of AT134 at Human/Mouse
Formulation :	Liquid in PBS containing 50% glycerol, 0.5% BSA and 0.02% sodium azide.
Source :	Polyclonal, Rabbit,IgG
Dilution :	WB 1:500-2000
Purification :	The antibody was affinity-purified from rabbit antiserum by affinity-chromatography using epitope-specific immunogen.
Concentration :	1 mg/ml
Storage Stability :	-15°C to -25°C/1 year(Do not lower than -25°C)

Molecularweight : 132kD

Function : catalytic activity:ATP + H(2)O = ADP + phosphate.,disease:A chromosomal aberration involving ATP13A4 is found in 2 patients with specific language impairment (SLI) disorders. Paracentric inversion inv(3)(q25;q29). The inversion produces a disruption of the protein.,induction:Decreased by half in the SLI patient lymphoblasts.,sequence caution:Wrong choice of CDS.,similarity:Belongs to the cation transport ATPase (P-type) family.,similarity:Belongs to the cation transport ATPase (P-type) family. Type V subfamily.,tissue specificity:Expressed in heart, placenta, liver, skeletal muscles, and pancreas. Lower levels of expression are also detected in brain, lung and kidney. Weakly expressed in the adult brain. Expression in fetal brain is higher than in adult brain, with levels similar to several other fetal tissues including spleen and skeletal muscle. In adult brain expressed at low levels i

Subcellular Location : Early endosome membrane ; Multi-pass membrane protein . Late endosome membrane ; Multi-pass membrane protein . Recycling endosome membrane ; Multi-pass membrane protein .

Expression : Expressed in heart, placenta, liver, skeletal muscles, and pancreas. Lower levels of expression are also detected in brain, lung and kidney. Weakly expressed in the adult brain. Expression in fetal brain is higher than in adult brain, with levels similar to several other fetal tissues including spleen and skeletal muscle. In adult brain expressed at low levels in all tissues examined, including the temporal lobe and putamen (PubMed:15925480). Highly expressed in the respiratory and integumentary systems (PubMed:29505581).

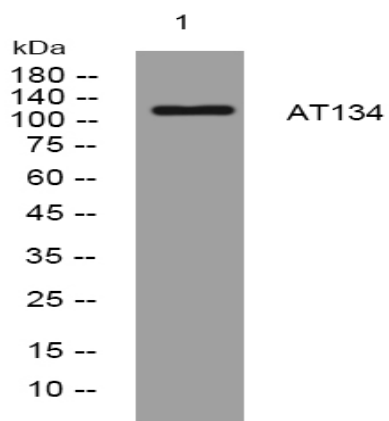
Sort : 2339

No4 : 1

Host : Rabbit

Modifications : Unmodified

Products Images



Western blot analysis of lysates from THP-1 cells, primary antibody was diluted at 1:1000, 4° over night