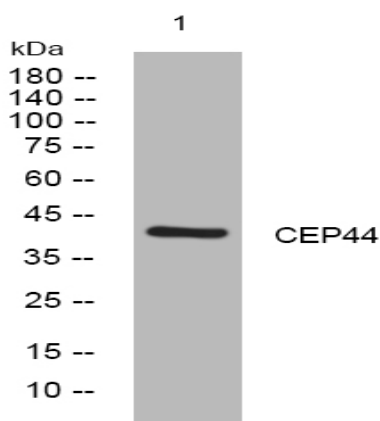


CEP44 rabbit pAb

Catalog No :	YT7057
Reactivity :	Human;Mouse;Rat
Applications :	WB
Target :	CEP44
Gene Name :	CEP44 KIAA1712
Protein Name :	CEP44
Human Gene Id :	80817
Human Swiss Prot No :	Q9C0F1
Mouse Gene Id :	382010
Mouse Swiss Prot No :	Q5HZK1
Rat Gene Id :	290722
Rat Swiss Prot No :	Q3B7T8
Immunogen :	Synthesized peptide derived from human CEP44 AA range: 298-348
Specificity :	This antibody detects endogenous levels of CEP44 at Human/Mouse/Rat
Formulation :	Liquid in PBS containing 50% glycerol, 0.5% BSA and 0.02% sodium azide.
Source :	Polyclonal, Rabbit,IgG
Dilution :	WB 1:500-2000
Purification :	The antibody was affinity-purified from rabbit antiserum by affinity-chromatography using epitope-specific immunogen.

Concentration :	1 mg/ml
Storage Stability :	-15°C to -25°C/1 year(Do not lower than -25°C)
Molecularweight :	43kD
Subcellular Location :	Cytoplasm, cytoskeleton, microtubule organizing center, centrosome . Cytoplasm, cytoskeleton, microtubule organizing center, centrosome, centriole . Cytoplasm, cytoskeleton, spindle pole . Midbody . Localizes to the proximal end of mother and daughter centrioles. .
Sort :	3853
No4 :	1
Host :	Rabbit
Modifications :	Unmodified

Products Images



Western blot analysis of lysates from HEK293 cells, primary antibody was diluted at 1:1000, 4° over night