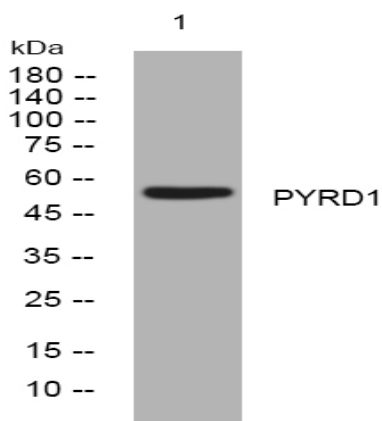


## PYRD1 rabbit pAb

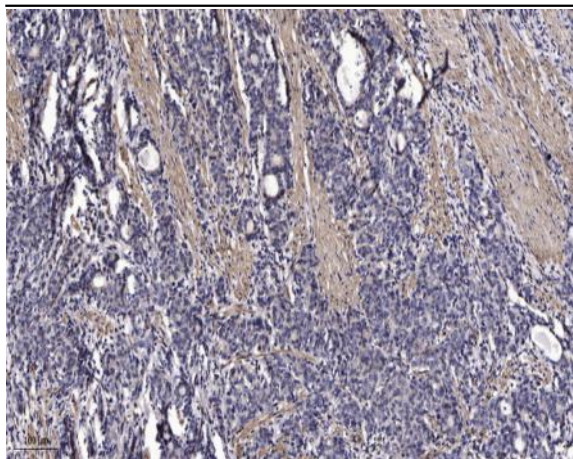
<b>Catalog No :</b>	YT7056
<b>Reactivity :</b>	Human;Mouse;Rat
<b>Applications :</b>	WB;ELISA;IHC
<b>Target :</b>	PYRD1
<b>Gene Name :</b>	PYROXD1
<b>Protein Name :</b>	PYRD1
<b>Human Gene Id :</b>	79912
<b>Human Swiss Prot No :</b>	Q8WU10
<b>Mouse Gene Id :</b>	232491
<b>Mouse Swiss Prot No :</b>	Q3TMV7
<b>Rat Gene Id :</b>	297708
<b>Rat Swiss Prot No :</b>	Q68FS6
<b>Immunogen :</b>	Synthesized peptide derived from human PYRD1 AA range: 374-424
<b>Specificity :</b>	This antibody detects endogenous levels of PYRD1 at Human/Mouse/Rat
<b>Formulation :</b>	Liquid in PBS containing 50% glycerol, 0.5% BSA and 0.02% sodium azide.
<b>Source :</b>	Polyclonal, Rabbit,IgG
<b>Dilution :</b>	WB 1:500-2000;IHC 1:50-300; ELISA 2000-20000
<b>Purification :</b>	The antibody was affinity-purified from rabbit antiserum by affinity-chromatography using epitope-specific immunogen.

<b>Concentration :</b>	1 mg/ml
<b>Storage Stability :</b>	-15°C to -25°C/1 year(Do not lower than -25°C)
<b>Molecularweight :</b>	55kD
<b>Function :</b>	cofactor: Binds 1 FAD per subunit., similarity: Belongs to the class-I pyridine nucleotide-disulfide oxidoreductase family. PYROXD1 subfamily.,
<b>Subcellular Location :</b>	Nucleus . Cytoplasm . Cytoplasm, myofibril, sarcomere .
<b>Sort :</b>	13191
<b>No4 :</b>	1
<b>Host :</b>	Rabbit
<b>Modifications :</b>	Unmodified

## Products Images



Western blot analysis of lysates from HpeG2 cells, primary antibody was diluted at 1:1000, 4° over night



Immunohistochemical analysis of paraffin-embedded human Gastric adenocarcinoma. 1, Antibody was diluted at 1:200(4° overnight). 2, Tris-EDTA,pH9.0 was used for antigen retrieval. 3,Secondary antibody was diluted at 1:200(room temperature, 45min).