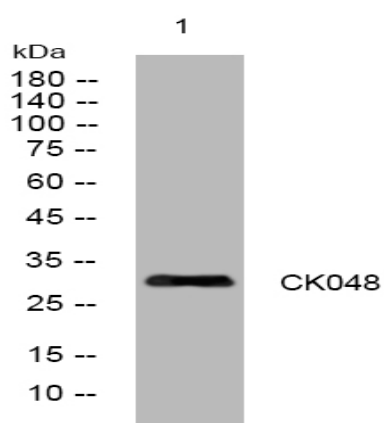


CK048 rabbit pAb

Catalog No :	YT7055
Reactivity :	Human
Applications :	WB
Target :	CK048
Gene Name :	C11orf48
Protein Name :	CK048
Human Gene Id :	79081
Human Swiss Prot No :	Q9BQE6
Immunogen :	Synthesized peptide derived from human CK048. AA range 37-67
Specificity :	This antibody detects endogenous levels of CK048 at Human
Formulation :	Liquid in PBS containing 50% glycerol, 0.5% BSA and 0.02% sodium azide.
Source :	Polyclonal, Rabbit,IgG
Dilution :	WB 1:500-2000
Purification :	The antibody was affinity-purified from rabbit antiserum by affinity-chromatography using epitope-specific immunogen.
Concentration :	1 mg/ml
Storage Stability :	-15°C to -25°C/1 year(Do not lower than -25°C)
Molecularweight :	32kD
Function :	PTM:Phosphorylated upon DNA damage, probably by ATM or ATR.,

Expression :	<u>Expressed in bladder cancer tissues (at protein level).</u>
Sort :	<u>4023</u>
No4 :	<u>1</u>
Host :	<u>Rabbit</u>
Modifications :	<u>Unmodified</u>

Products Images



Western blot analysis of lysates from AD293 cells, primary antibody was diluted at 1:1000, 4° over night