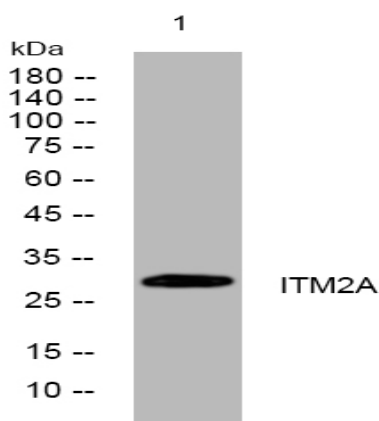


ITM2A rabbit pAb

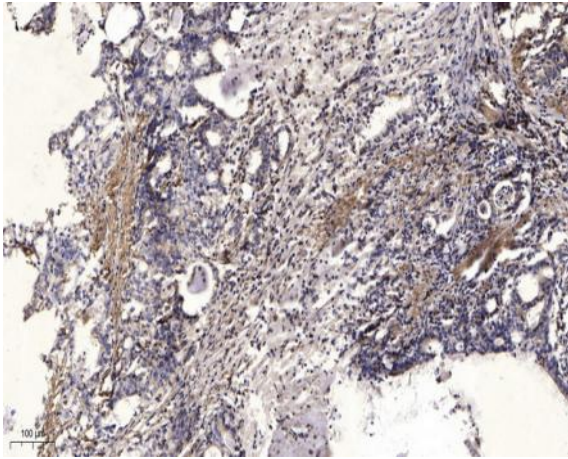
Catalog No :	YT7054
Reactivity :	Human;Mouse
Applications :	WB;IHC
Target :	ITM2A
Gene Name :	ITM2A UNQ603/PRO1189
Protein Name :	ITM2A
Human Gene Id :	9452
Human Swiss Prot No :	O43736
Mouse Gene Id :	16431
Mouse Swiss Prot No :	Q61500
Immunogen :	Synthesized peptide derived from human ITM2A AA range: 129-179
Specificity :	This antibody detects endogenous levels of ITM2A at Human/Mouse
Formulation :	Liquid in PBS containing 50% glycerol, 0.5% BSA and 0.02% sodium azide.
Source :	Polyclonal, Rabbit,IgG
Dilution :	WB 1:500-2000;IHC 1:50-300
Purification :	The antibody was affinity-purified from rabbit antiserum by affinity-chromatography using epitope-specific immunogen.
Concentration :	1 mg/ml
Storage Stability :	-15°C to -25°C/1 year(Do not lower than -25°C)

Molecularweight : 29kD**Background :** This gene encodes a type II membrane protein that belongs to the ITM2 family. Studies in mouse suggest that it may be involved in osteo- and chondrogenic differentiation. Alternatively spliced transcript variants encoding different isoforms have been found for this gene. [provided by RefSeq, Jan 2010],**Function :** similarity:Belongs to the ITM2 family.,similarity:Contains 1 BRICHOS domain.,**Subcellular Location :** Membrane ; Single-pass type II membrane protein .**Sort :** 8731**No4 :** 1**Host :** Rabbit**Modifications :** Unmodified

Products Images



Western blot analysis of lysates from Jurkat cells, primary antibody was diluted at 1:1000, 4° over night



Immunohistochemical analysis of paraffin-embedded human Gastric adenocarcinoma. 1, Antibody was diluted at 1:200(4° overnight). 2, Tris-EDTA,pH9.0 was used for antigen retrieval. 3,Secondary antibody was diluted at 1:200(room temperature, 45min).