

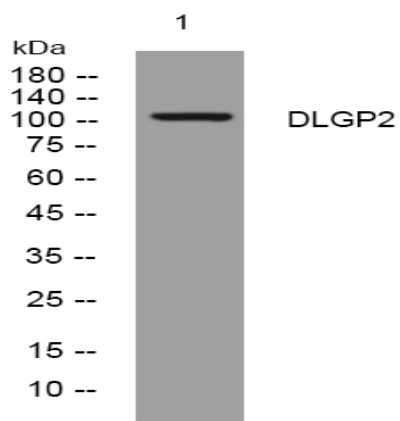
## DLGP2 rabbit pAb

<b>Catalog No :</b>	YT7053
<b>Reactivity :</b>	Human;Mouse;Rat
<b>Applications :</b>	WB
<b>Target :</b>	DLGP2
<b>Gene Name :</b>	DLGAP2 DAP2
<b>Protein Name :</b>	DLGP2
<b>Human Gene Id :</b>	9228
<b>Human Swiss Prot No :</b>	Q9P1A6
<b>Mouse Gene Id :</b>	244310
<b>Mouse Swiss Prot No :</b>	Q8BJ42
<b>Rat Gene Id :</b>	116681
<b>Rat Swiss Prot No :</b>	P97837
<b>Immunogen :</b>	Synthesized peptide derived from human DLGP2 AA range: 727-777
<b>Specificity :</b>	This antibody detects endogenous levels of DLGP2 at Human/Mouse/Rat
<b>Formulation :</b>	Liquid in PBS containing 50% glycerol, 0.5% BSA and 0.02% sodium azide.
<b>Source :</b>	Polyclonal, Rabbit,IgG
<b>Dilution :</b>	WB 1:500-2000
<b>Purification :</b>	The antibody was affinity-purified from rabbit antiserum by affinity-chromatography using epitope-specific immunogen.

<b>Concentration :</b>	1 mg/ml
<b>Storage Stability :</b>	-15°C to -25°C/1 year(Do not lower than -25°C)
<b>Molecularweight :</b>	116kD
<b>Background :</b>	The product of this gene is a membrane-associated protein that may play a role in synapse organization and signalling in neuronal cells. This gene is biallelically expressed in the brain, however, only the paternal allele is expressed in the testis (PMID:18055845). Alternatively spliced transcript variants encoding different isoforms have been identified. [provided by RefSeq, Jun 2014],
<b>Function :</b>	function:May play a role in the molecular organization of synapses and neuronal cell signaling. Could be an adapter protein linking ion channel to the subsynaptic cytoskeleton. May induce enrichment of PSD-95/SAP90 at the plasma membrane.,similarity:Belongs to the SAPAP family.,subcellular location:Postsynaptic density of neuronal cells.,subunit:Interacts with DLG1 and DLG4/PSD-95.,tissue specificity:Expressed in brain and kidney.,
<b>Subcellular Location :</b>	Cell membrane ; Peripheral membrane protein . Cell junction, synapse, postsynaptic density . Cell junction, synapse . Postsynaptic density of neuronal cells. .
<b>Expression :</b>	Expressed in brain and kidney.
<b>Sort :</b>	5157
<b>No4 :</b>	1
<b>Host :</b>	Rabbit
<b>Modifications :</b>	Unmodified

---

## Products Images



Western blot analysis of lysates from PC-12 cells, primary antibody was diluted at 1:1000, 4° over night