

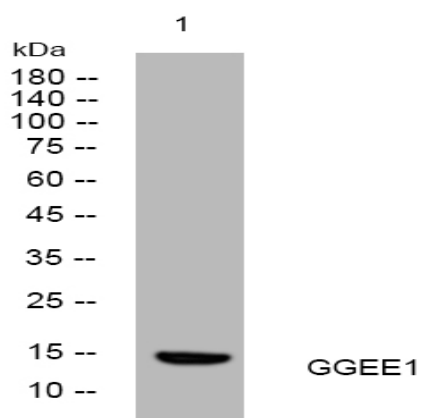
GGEE1 rabbit pAb

Catalog No :	YT7050
Reactivity :	Human
Applications :	WB
Target :	GGEE1
Gene Name :	PAGE5 GAGEE1
Protein Name :	GGEE1
Human Gene Id :	90737
Human Swiss Prot No :	Q96GU1
Immunogen :	Synthesized peptide derived from human GGEE1 AA range: 35-85
Specificity :	This antibody detects endogenous levels of GGEE1 at Human
Formulation :	Liquid in PBS containing 50% glycerol, 0.5% BSA and 0.02% sodium azide.
Source :	Polyclonal, Rabbit,IgG
Dilution :	WB 1:500-2000
Purification :	The antibody was affinity-purified from rabbit antiserum by affinity-chromatography using epitope-specific immunogen.
Concentration :	1 mg/ml
Storage Stability :	-15°C to -25°C/1 year(Do not lower than -25°C)
Molecularweight :	14kD
Background :	This gene is a member of family of proteins that are expressed in a variety of tumors and in some fetal and reproductive tissues. The encoded protein may protect cells from programmed cell death. Multiple alternatively spliced transcript

variants encoding distinct isoforms have been found. [provided by RefSeq, Jan 2015],

Function :	similarity:Belongs to the GAGE family.,
Sort :	6568
No4 :	1
Host :	Rabbit
Modifications :	Unmodified

Products Images



Western blot analysis of lysates from HpeG2 cells, primary antibody was diluted at 1:1000, 4° over night