

C99L2 rabbit pAb

Catalog No :	YT7046
Reactivity :	Human;Mouse;Rat
Applications :	WB
Target :	C99L2
Fields :	>>Cell adhesion molecules;>>Leukocyte transendothelial migration
Gene Name :	CD99L2 MIC2L1 UNQ1964/PRO4486
Protein Name :	C99L2
Human Gene Id :	83692
Human Swiss Prot No :	Q8TCZ2
Mouse Gene Id :	171486
Mouse Swiss Prot No :	Q8BIF0
Rat Gene Id :	171485
Rat Swiss Prot No :	Q8R1R5
Immunogen :	Synthesized peptide derived from human C99L2 AA range: 204-254
Specificity :	This antibody detects endogenous levels of C99L2 at Human/Mouse/Rat
Formulation :	Liquid in PBS containing 50% glycerol, 0.5% BSA and 0.02% sodium azide.
Source :	Polyclonal, Rabbit,IgG
Dilution :	WB 1[?]500-2000
Purification :	The antibody was affinity-purified from rabbit antiserum by affinity-

chromatography using epitope-specific immunogen.

Concentration : 1 mg/ml

Storage Stability : -15°C to -25°C/1 year(Do not lower than -25°C)

Molecularweight : 29kD

Background : This gene encodes a cell-surface protein that is similar to CD99. A similar protein in mouse functions as an adhesion molecule during leukocyte extravasation. Alternate splicing results in multiple transcript variants. [provided by RefSeq, May 2010],

Function : function:May function as a homophilic adhesion molecule. Functions in leukocyte-endothelial cell interactions during leukocyte extravasation, and in particular, at the diapedesis step. Does not seem to be involved in docking of leukocytes to the vessel wall or in lymphocyte diapedesis.,PTM:O-glycosylated.,similarity:Belongs to the CD99 family.,tissue specificity:Expressed in brain, heart, lung, liver, spleen, kidney, stomach, small intestine, skeletal muscle, ovary, thymus, testis and uterus. Lower expression seen in thymus. Expressed in E18 uterus and placenta.,

Subcellular Location : Cell membrane ; Single-pass type I membrane protein ; Extracellular side . Cell junction .

Expression : Expressed in many tissues, with low expression in thymus.

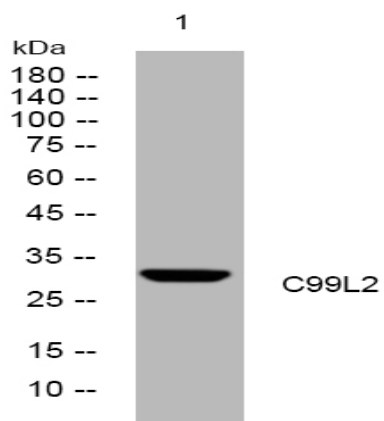
Sort : 2955

No4 : 1

Host : Rabbit

Modifications : Unmodified

Products Images



Western blot analysis of lysates from 293T cells, primary antibody was diluted at 1:1000, 4° over night