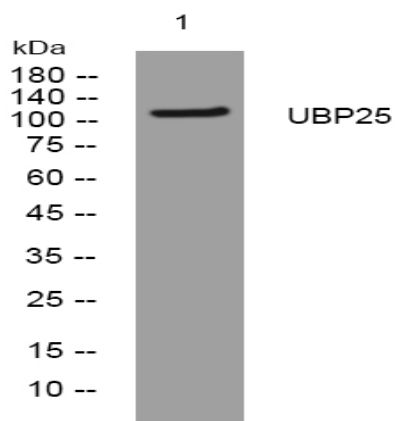


## UBP25 rabbit pAb

|                              |   |
|------------------------------|---|
| <b>Catalog No :</b>          | YT7037  |
| <b>Reactivity :</b>          | Human;Mouse   |
| <b>Applications :</b>        | WB  |
| <b>Target :</b>              | UBP25   |
| <b>Fields :</b>              | >>IL-17 signaling pathway   |
| <b>Gene Name :</b>           | USP25 USP21   |
| <b>Protein Name :</b>        | UBP25   |
| <b>Human Gene Id :</b>       | 29761   |
| <b>Human Swiss Prot No :</b> | Q9UHP3  |
| <b>Mouse Gene Id :</b>       | 30940   |
| <b>Mouse Swiss Prot No :</b> | P57080  |
| <b>Immunogen :</b>           | Synthesized peptide derived from human UB25 AA range: 883-933   |
| <b>Specificity :</b>         | This antibody detects endogenous levels of UB25 at Human/Mouse  |
| <b>Formulation :</b>         | Liquid in PBS containing 50% glycerol, 0.5% BSA and 0.02% sodium azide.   |
| <b>Source :</b>              | Polyclonal, Rabbit,IgG  |
| <b>Dilution :</b>            | WB 1:500-2000   |
| <b>Purification :</b>        | The antibody was affinity-purified from rabbit antiserum by affinity-chromatography using epitope-specific immunogen. |
| <b>Concentration :</b>       | 1 mg/ml   |

|                               |  |
|-------------------------------|--|
| <b>Storage Stability :</b>    | -15°C to -25°C/1 year(Do not lower than -25°C)   |
| <b>Molecularweight :</b>      | 116kD  |
| <b>Background :</b>           | Ubiquitin (MIM 191339) is a highly conserved 76-amino acid protein involved in regulation of intracellular protein breakdown, cell cycle regulation, and stress response. Ubiquitin is released from degraded proteins by disassembly of the polyubiquitin chains, which is mediated by ubiquitin-specific proteases (USPs), such as USP25 (Valero et al., 1999 [PubMed 10644437]).[supplied by OMIM, Mar 2008],   |
| <b>Function :</b>             | catalytic activity:Ubiquitin C-terminal thioester + H(2)O = ubiquitin + a thiol.,function:Involved in the ubiquitin-dependent proteolytic pathway in conjunction with the 26S proteasome.,similarity:Belongs to the peptidase C19 family.,similarity:Contains 2 UIM (ubiquitin-interacting motif) repeats.,tissue specificity:Found in most adult and fetal tissues; expression is moderately high in testis, pancreas, kidney, skeletal muscle, liver, lung, placenta, brain, heart, but very low in peripheral blood, colon, small intestine, ovary, prostate, thymus and spleen., |
| <b>Subcellular Location :</b> | Cytoplasm .; [Isoform USP25m]: Cytoplasm . Nucleus . Some transient punctuate nuclear location in myotubes during myocyte development. .   |
| <b>Expression :</b>           | Isoform USP25a is found in most adult and fetal tissues; expression is moderately high in testis, pancreas, kidney, skeletal muscle, liver, lung, placenta, brain, heart, but very low in peripheral blood, colon, small intestine, ovary, prostate, thymus and spleen. Isoform USP25b is found in all tissues except heart and skeletal muscle. Isoform USP25m is heart and skeletal muscle specific.   |
| <b>Sort :</b>                 | 23891  |
| <b>No4 :</b>                  | 1  |
| <b>Host :</b>                 | Rabbit   |
| <b>Modifications :</b>        | Unmodified   |

## Products Images



Western blot analysis of lysates from THP-1 cells, primary antibody was diluted at 1:1000, 4° over night