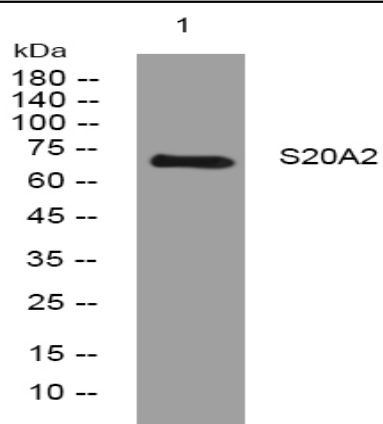


S20A2 rabbit pAb

Catalog No :	YT7035
Reactivity :	Human;Mouse;Rat
Applications :	WB
Target :	S20A2
Gene Name :	SLC20A2 GLVR2 PIT2
Protein Name :	S20A2
Human Gene Id :	6575
Human Swiss Prot No :	Q08357
Mouse Gene Id :	20516
Mouse Swiss Prot No :	Q80UP8
Rat Gene Id :	29502
Rat Swiss Prot No :	Q63488
Immunogen :	Synthesized peptide derived from human S20A2 AA range: 370-420
Specificity :	This antibody detects endogenous levels of S20A2 at Human/Mouse/Rat
Formulation :	Liquid in PBS containing 50% glycerol, 0.5% BSA and 0.02% sodium azide.
Source :	Polyclonal, Rabbit,IgG
Dilution :	WB 1:500-2000
Purification :	The antibody was affinity-purified from rabbit antiserum by affinity-chromatography using epitope-specific immunogen.

Concentration :	1 mg/ml
Storage Stability :	-15°C to -25°C/1 year(Do not lower than -25°C)
Molecularweight :	72kD
Background :	<p>This gene encodes a member of the inorganic phosphate transporter family. The encoded protein is a type 3 sodium-dependent phosphate symporter that plays an important role in phosphate homeostasis by mediating cellular phosphate uptake. The encoded protein also confers susceptibility to viral infection as a gamma-retroviral receptor. Mutations in this gene may play a role in familial idiopathic basal ganglia calcification. Alternatively spliced transcript variants encoding multiple isoforms have been observed for this gene. [provided by RefSeq, Mar 2012],</p>
Function :	<p>function:Sodium-phosphate symporter which seems to play a fundamental housekeeping role in phosphate transport by absorbing phosphate from interstitial fluid for normal cellular functions such as cellular metabolism, signal transduction, and nucleic acid and lipid synthesis. In vitro, sodium-dependent phosphate uptake is not significantly affected by acidic and alkaline conditions, however sodium-independent phosphate uptake occurs at acidic conditions. May play a role in extracellular matrix, cartilage and vascular calcification. Functions as a retroviral receptor and confers human cells susceptibility to infection to amphotropic murine leukemia virus (A-MuLV), 10A1 murine leukemia virus (10A1 MLV) and some feline leukemia virus subgroup B (FeLV-B) variants.,induction:Increased by phosphate depletion in osteosarcoma cell lines.,similarity:Belongs to the inorganic phosphate transporter</p>
Subcellular Location :	Cell membrane ; Multi-pass membrane protein .
Expression :	Ubiquitously expressed.
Sort :	14715
No4 :	1
Host :	Rabbit
Modifications :	Unmodified

Products Images



Western blot analysis of lysates from 3T3 cells, primary antibody was diluted at 1:1000, 4° over night