

EXOS1 rabbit pAb

Catalog No :	YT7031
Reactivity :	Human;Mouse
Applications :	WB
Target :	EXOS1
Fields :	>>RNA degradation
Gene Name :	EXOSC1 CSL4 CGI-108
Protein Name :	EXOS1
Human Gene Id :	51013
Human Swiss Prot No :	Q9Y3B2
Mouse Gene Id :	66583
Mouse Swiss Prot No :	Q9DAA6
Immunogen :	Synthesized peptide derived from human EXOS1 AA range: 93-143
Specificity :	This antibody detects endogenous levels of EXOS1 at Human/Mouse
Formulation :	Liquid in PBS containing 50% glycerol, 0.5% BSA and 0.02% sodium azide.
Source :	Polyclonal, Rabbit,IgG
Dilution :	WB 1[?]500-2000
Purification :	The antibody was affinity-purified from rabbit antiserum by affinity-chromatography using epitope-specific immunogen.
Concentration :	1 mg/ml

Storage Stability : -15°C to -25°C/1 year(Do not lower than -25°C)

Molecularweight : 21kD

Background : This gene encodes a core component of the exosome. The mammalian exosome is required for rapid degradation of AU rich element-containing RNAs but not for poly(A) shortening. The association of this protein with the exosome is mediated by protein-protein interactions with ribosomal RNA-processing protein 42 and ribosomal RNA-processing protein 46. Alternative splicing of this gene results in multiple transcript variants. [provided by RefSeq, Jan 2016],

Function : domain:The N- and C-terminal regions of the protein are required for interaction with RRP46.,function:Component of the exosome 3'->5' exoribonuclease complex, a complex that degrades inherently unstable mRNAs containing AU-rich elements (AREs) within their 3' untranslated regions. Required for the 3'processing of the 7S pre-RNA to the mature 5.8S rRNA. Has a 3'-5' exonuclease activity.,similarity:Contains 1 S1 motif domain.,subunit:Component of the exosome multienzyme ribonuclease complex composed of at least 11 proteins: EXOSC1/CSL4, EXOSC2/RRP4, EXOSC3/RRP40, EXOSC4/RRP41, EXOSC5/RRP46, EXOSC6/MTR3, EXOSC7/RRP42, EXOSC8/RRP43, EXOSC9/Scl-75, DIS3/RRP44, and EXOSC10/Scl-100 (only in the nuclear complex). Interacts directly with EXOSC5, EXOSC6, EXOSC7 and EXOSC8. Also associated with the GTPase Ran.,

Subcellular Location : Nucleus, nucleolus . Nucleus . Cytoplasm .

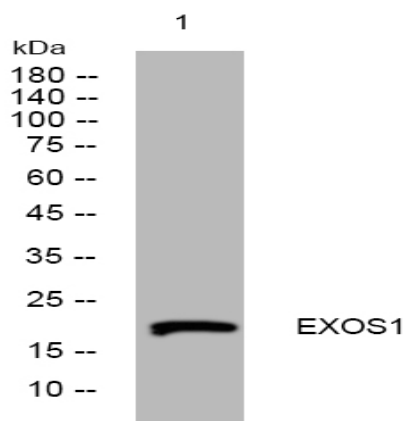
Sort : 5793

No4 : 1

Host : Rabbit

Modifications : Unmodified

Products Images



Western blot analysis of lysates from U2OS cells, primary antibody was diluted at 1:1000, 4° over night