

SAMD1 rabbit pAb

Catalog No :	YT7029
Reactivity :	Human;Mouse
Applications :	WB
Target :	SAMD1
Gene Name :	SAMD1
Protein Name :	SAMD1
Human Gene Id :	90378
Human Swiss Prot No :	Q6SPF0
Mouse Gene Id :	666704
Mouse Swiss Prot No :	D3YXK1
Immunogen :	Synthesized peptide derived from human SAMD1 AA range: 418-468
Specificity :	This antibody detects endogenous levels of SAMD1 at Human/Mouse
Formulation :	Liquid in PBS containing 50% glycerol, 0.5% BSA and 0.02% sodium azide.
Source :	Polyclonal, Rabbit,IgG
Dilution :	WB 1:500-2000
Purification :	The antibody was affinity-purified from rabbit antiserum by affinity-chromatography using epitope-specific immunogen.
Concentration :	1 mg/ml
Storage Stability :	-15°C to -25°C/1 year(Do not lower than -25°C)

Molecularweight : 59kD

Function : function:May play a role in atherogenesis by immobilizing LDL in the atherial wall.,similarity:Contains 1 SAM (sterile alpha motif) domain.,tissue specificity:Expressed in atherosclerotic lesions, not in normal intima.,

Subcellular Location : Nucleus . Chromosome . Secreted . In atherosclerotic lesions, it is found in the extracellular compartment and in foam cells cytoplasm. .

Expression : Expressed in atherosclerotic lesions, not in normal intima. Expressed in foam cells.

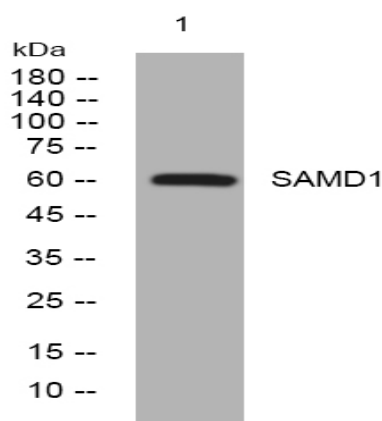
Sort : 14754

No4 : 1

Host : Rabbit

Modifications : Unmodified

Products Images



Western blot analysis of lysates from 293T cells, primary antibody was diluted at 1:1000, 4° over night