

CHMP6 rabbit pAb

Catalog No :	YT7028
Reactivity :	Human;Mouse
Applications :	WB
Target :	CHMP6
Fields :	>>Viral life cycle - HIV-1;>>Endocytosis;>>Necroptosis
Gene Name :	CHMP6 VPS20
Protein Name :	CHMP6
Human Gene Id :	79643
Human Swiss Prot No :	Q96FZ7
Mouse Gene Id :	208092
Mouse Swiss Prot No :	P0C0A3
Immunogen :	Synthesized peptide derived from human CHMP6 AA range: 87-137
Specificity :	This antibody detects endogenous levels of CHMP6 at Human/Mouse
Formulation :	Liquid in PBS containing 50% glycerol, 0.5% BSA and 0.02% sodium azide.
Source :	Polyclonal, Rabbit,IgG
Dilution :	WB 1[?]500-2000
Purification :	The antibody was affinity-purified from rabbit antiserum by affinity-chromatography using epitope-specific immunogen.
Concentration :	1 mg/ml

Storage Stability : -15°C to -25°C/1 year(Do not lower than -25°C)

Molecularweight : 22kD

Background : This gene encodes a member of the chromatin-modifying protein/charged multivesicular body protein family. Proteins in this family are part of the ESCRT-III (endosomal sorting complex required for transport III) which degrades surface receptors, and in biosynthesis of endosomes. [provided by RefSeq, Mar 2012],

Function : domain:The acidic C-terminus and the basic N-terminus are thought to render the protein in a closed, soluble and inactive conformation through an autoinhibitory intramolecular interaction. The open and active conformation, which enables membrane binding and oligomerization, is achieved by interaction with other cellular binding partners, probably including other ESCRT components.,function:Probable core component of the endosomal sorting required for transport complex III (ESCRT-III) which is involved in multivesicular bodies (MVBs) formation and sorting of endosomal cargo proteins into MVBs. MVBs contain intraluminal vesicles (ILVs) that are generated by invagination and scission from the limiting membrane of the endosome and mostly are delivered to lysosomes enabling degradation of membrane proteins, such as stimulated growth factor receptors, lysosomal enzymes and lipids. The MVB path

Subcellular Location : Endomembrane system. Endosome membrane; Lipid-anchor. Late endosome membrane . Membrane ; Lipid-anchor . Localizes to endosomal membranes.

Expression : Ubiquitously expressed.

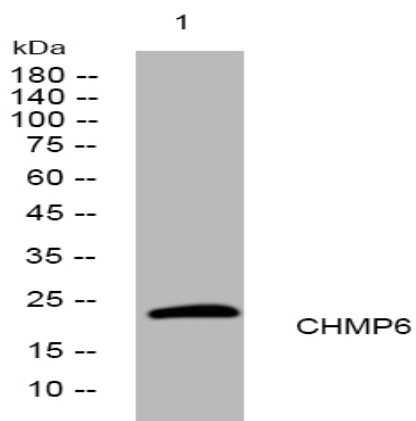
Sort : 3959

No4 : 1

Host : Rabbit

Modifications : Unmodified

Products Images



Western blot analysis of lysates from THP-1 cells, primary antibody was diluted at 1:1000, 4° over night