

## PPIL1 rabbit pAb

|                              |   |
|------------------------------|---|
| <b>Catalog No :</b>          | YT7024  |
| <b>Reactivity :</b>          | Human;Mouse   |
| <b>Applications :</b>        | WB;IHC  |
| <b>Target :</b>              | PPIL1   |
| <b>Fields :</b>              | >>Spliceosome   |
| <b>Gene Name :</b>           | PPIL1 CYPL1 CGI-124 UNQ2425/PRO4984   |
| <b>Protein Name :</b>        | PPIL1   |
| <b>Human Gene Id :</b>       | 51645   |
| <b>Human Swiss Prot No :</b> | Q9Y3C6  |
| <b>Mouse Gene Id :</b>       | 68816   |
| <b>Mouse Swiss Prot No :</b> | Q9D0W5  |
| <b>Immunogen :</b>           | Synthesized peptide derived from human PPIL1 AA range: 73-123   |
| <b>Specificity :</b>         | This antibody detects endogenous levels of PPIL1 at Human/Mouse   |
| <b>Formulation :</b>         | Liquid in PBS containing 50% glycerol, 0.5% BSA and 0.02% sodium azide.   |
| <b>Source :</b>              | Polyclonal, Rabbit,IgG  |
| <b>Dilution :</b>            | WB 1:500-2000;IHC 1:50-300  |
| <b>Purification :</b>        | The antibody was affinity-purified from rabbit antiserum by affinity-chromatography using epitope-specific immunogen. |
| <b>Concentration :</b>       | 1 mg/ml   |

**Storage Stability :** -15°C to -25°C/1 year(Do not lower than -25°C)

**Molecularweight :** 18kD

**Background :** This gene is a member of the cyclophilin family of peptidylprolyl isomerases (PPIases). The cyclophilins are a highly conserved, ubiquitous family, members of which play an important role in protein folding, immunosuppression by cyclosporin A, and infection of HIV-1 virions. Based on similarity to other PPIases, this protein could accelerate the folding of proteins and might catalyze the cis-trans isomerization of proline imidic peptide bonds in oligopeptides. [provided by RefSeq, Jul 2008],

**Function :** catalytic activity:Peptidylproline (omega=180) = peptidylproline (omega=0).,enzyme regulation:Inhibited by Cyclosporin A.,function:PPIases accelerate the folding of proteins. It catalyzes the cis-trans isomerization of proline imidic peptide bonds in oligopeptides. May be involved in pre-mRNA splicing.,similarity:Belongs to the cyclophilin-type PPIase family. PPIL1 subfamily.,similarity:Contains 1 PPIase cyclophilin-type domain.,subunit:Identified in the spliceosome C complex, at least composed of AQR, ASCC3L1, C19orf29, CDC40, CDC5L, CRNKL1, DDX23, DDX41, DDX48, DDX5, DGCR14, DHX35, DHX38, DHX8, EFTUD2, FRG1, GPATC1, HNRPA1, HNRPA2B1, HNRPA3, HNRPC, HNRPF, HNRPH1, HNRPK, HNRPM, HNRPR, HNRPU, KIAA1160, KIAA1604, LSM2, LSM3, MAGOH, MORG1, PABPC1, PLRG1, PNN, PPIE, PPIL1, PPIL3, PPWD1, PRPF19, PRPF4B, PRPF6, PRPF8, RALY, RBM22, RBM8A, RBMX, SART1, SF3A1, SF3A2, SF3A3, SF3B1, SF3B2, SF3B3,

**Subcellular Location :** Nucleus .

**Expression :** Ubiquitous, with the most abundant expression in heart and skeletal muscle.

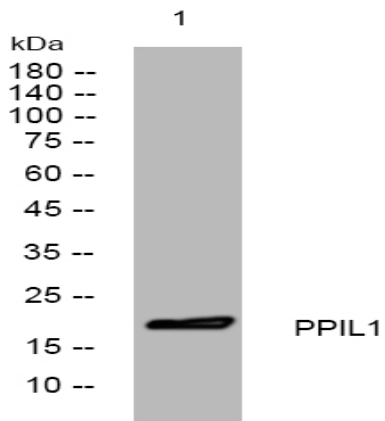
**Sort :** 12953

**No4 :** 1

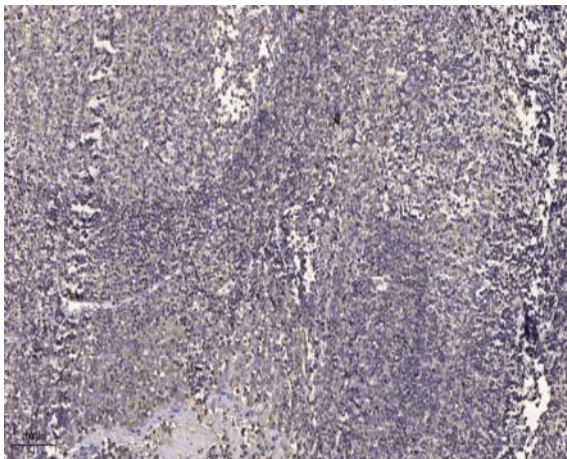
**Host :** Rabbit

**Modifications :** Unmodified

**Products Images**



Western blot analysis of lysates from HEK293 cells, primary antibody was diluted at 1:1000, 4° over night



Immunohistochemical analysis of paraffin-embedded human tonsil. 1, Antibody was diluted at 1:200(4° overnight). 2, Tris-EDTA,pH9.0 was used for antigen retrieval. 3,Secondary antibody was diluted at 1:200(room temperature, 45min).