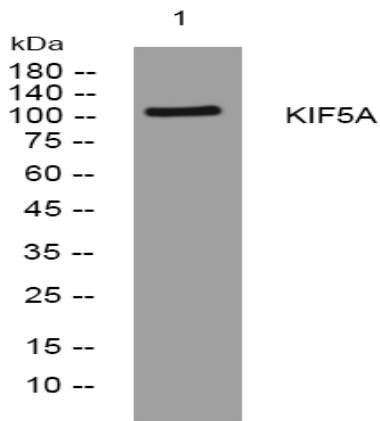


KIF5A rabbit pAb

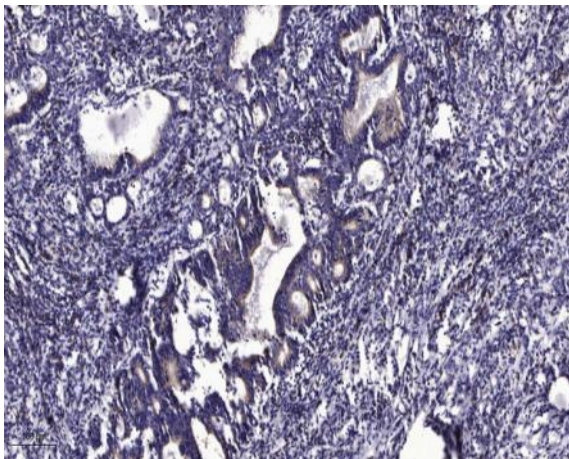
Catalog No :	YT7022
Reactivity :	Human;Mouse;Rat
Applications :	WB;ELISA;IHC
Target :	KIF5A
Fields :	>>Endocytosis;>>Dopaminergic synapse;>>Alzheimer disease;>>Parkinson disease;>>Amyotrophic lateral sclerosis;>>Huntington disease;>>Prion disease;>>Pathways of neurodegeneration - multiple diseases;>>Salmonella infection;>>Non-small cell lung cancer
Gene Name :	KIF5A NKHC1
Protein Name :	KIF5A
Human Gene Id :	3798
Human Swiss Prot No :	Q12840
Mouse Gene Id :	16572
Mouse Swiss Prot No :	P33175
Rat Gene Id :	314906
Rat Swiss Prot No :	Q6QLM7
Immunogen :	Synthesized peptide derived from human KIF5A AA range: 213-263
Specificity :	This antibody detects endogenous levels of KIF5A at Human/Mouse/Rat
Formulation :	Liquid in PBS containing 50% glycerol, 0.5% BSA and 0.02% sodium azide.
Source :	Polyclonal, Rabbit,IgG
Dilution :	WB 1:500-2000;IHC 1:50-300; ELISA 2000-20000

Purification :	The antibody was affinity-purified from rabbit antiserum by affinity-chromatography using epitope-specific immunogen.
Concentration :	1 mg/ml
Storage Stability :	-15°C to -25°C/1 year(Do not lower than -25°C)
Molecularweight :	114kD
Background :	This gene encodes a member of the kinesin family of proteins. Members of this family are part of a multisubunit complex that functions as a microtubule motor in intracellular organelle transport. Mutations in this gene cause autosomal dominant spastic paraplegia 10. [provided by RefSeq, Jul 2008],
Function :	disease:Defects in KIF5A are the cause of spastic paraplegia type 10 (SPG10) [MIM:604187]. SPG10 is a form of autosomal dominant hereditary spastic paraplegia (AD-HSP). HSP is a group of inherited degenerative spinal cord disorders characterized by a slow, gradual, progressive weakness and spasticity (stiffness) of the legs. Rate of progression and the severity of symptoms is quite variable. Initial symptoms may include difficulty with balance, weakness and stiffness in the legs, muscle spasms, and dragging the toes when walking. In some forms of the disorder, bladder symptoms (such as incontinence) may appear, or the weakness and stiffness may spread to other parts of the body.,domain:Composed of three structural domains: a large globular N-terminal domain which is responsible for the motor activity of kinesin (it hydrolyzes ATP and binds microtubule), a central alpha-helical coiled coi
Subcellular Location :	Cytoplasm, perinuclear region . Cytoplasm, cytoskeleton . Perikaryon . Concentrated in the cell body of the neurons, particularly in the perinuclear region.
Expression :	Distributed throughout the CNS but is highly enriched in subsets of neurons.
Sort :	8919
No4 :	1
Host :	Rabbit
Modifications :	Unmodified

Products Images



Western blot analysis of lysates from MCF-7 cells, primary antibody was diluted at 1:1000, 4° over night



Immunohistochemical analysis of paraffin-embedded human Gastric adenocarcinoma. 1, Antibody was diluted at 1:200(4° overnight). 2, Tris-EDTA,pH9.0 was used for antigen retrieval. 3,Secondary antibody was diluted at 1:200(room temperature, 45min).