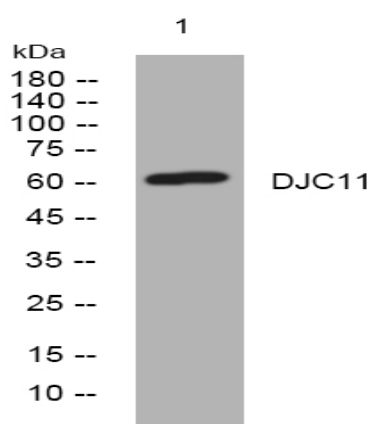


DJC11 rabbit pAb

Catalog No :	YT7019
Reactivity :	Human;Mouse
Applications :	WB
Target :	DJC11
Gene Name :	DNAJC11
Protein Name :	DJC11
Human Gene Id :	55735
Human Swiss Prot No :	Q9NVH1
Mouse Gene Id :	230935
Mouse Swiss Prot No :	Q5U458
Immunogen :	Synthesized peptide derived from human DJC11 AA range: 206-256
Specificity :	This antibody detects endogenous levels of DJC11 at Human/Mouse
Formulation :	Liquid in PBS containing 50% glycerol, 0.5% BSA and 0.02% sodium azide.
Source :	Polyclonal, Rabbit,IgG
Dilution :	WB 1:500-2000
Purification :	The antibody was affinity-purified from rabbit antiserum by affinity-chromatography using epitope-specific immunogen.
Concentration :	1 mg/ml
Storage Stability :	-15°C to -25°C/1 year(Do not lower than -25°C)

Molecularweight :	61kD
Function :	similarity:Belongs to the DNAJC11 family.,similarity:Contains 1 J domain.,
Subcellular Location :	Mitochondrion . Isoforms show differential submitochondrial localization. A 57 kDa form (potentially isoform 3) shows either mitochondrial matrix or innermembrane (IM) localization, possibly anchored to the IM facing the matrix. A 35 kDa form behaved either as an inner membrane space (IMS) or an IM protein exposed to the IMS. .; [Isoform 1]: Mitochondrion outer membrane ; Peripheral membrane protein .
Sort :	5145
No4 :	1
Host :	Rabbit
Modifications :	Unmodified

Products Images



Western blot analysis of lysates from HeLa cells, primary antibody was diluted at 1:1000, 4° over night