

PFD4 rabbit pAb

Catalog No :	YT7017
Reactivity :	Human
Applications :	WB;IHC
Target :	PFD4
Gene Name :	PFDN4 PFD4
Protein Name :	PFD4
Human Gene Id :	5203
Human Swiss Prot No :	Q9NQP4
Immunogen :	Synthesized peptide derived from human PFD4 AA range: 65-115
Specificity :	This antibody detects endogenous levels of PFD4 at Human
Formulation :	Liquid in PBS containing 50% glycerol, 0.5% BSA and 0.02% sodium azide.
Source :	Polyclonal, Rabbit,IgG
Dilution :	WB 1:500-2000;IHC 1:50-300
Purification :	The antibody was affinity-purified from rabbit antiserum by affinity-chromatography using epitope-specific immunogen.
Concentration :	1 mg/ml
Storage Stability :	-15°C to -25°C/1 year(Do not lower than -25°C)
Molecularweight :	15kD
Background :	This gene encodes a member of the prefoldin beta subunit family. The encoded protein is one of six subunits of prefoldin, a molecular chaperone complex that binds and stabilizes newly synthesized polypeptides, thereby allowing them to

fold correctly. The complex, consisting of two alpha and four beta subunits, forms a double beta barrel assembly with six protruding coiled-coils. [provided by RefSeq, Jul 2008],

Function :

function: Binds specifically to cytosolic chaperonin (c-CPN) and transfers target proteins to it. Binds to nascent polypeptide chain and promotes folding in an environment in which there are many competing pathways for nonnative proteins., similarity: Belongs to the prefoldin subunit beta family., subunit: Heterohexamer of two PFD-alpha type and four PFD-beta type subunits.,

Subcellular Location :

Nucleus . Cytoplasm . Mitochondrion .

Sort :

11851

No4 :

1

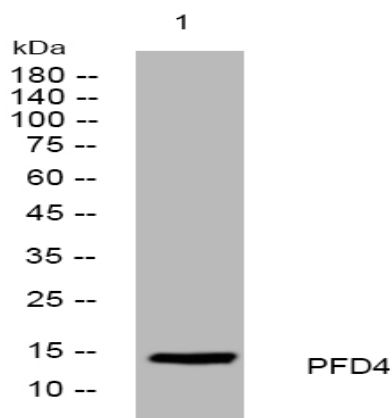
Host :

Rabbit

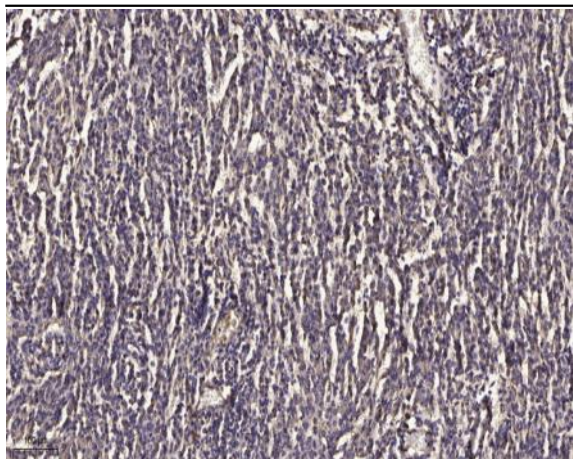
Modifications :

Unmodified

Products Images



Western blot analysis of lysates from MCF-7 cells, primary antibody was diluted at 1:1000, 4° over night



Immunohistochemical analysis of paraffin-embedded human meningioma. 1, Antibody was diluted at 1:200(4 ° overnight). 2, Tris-EDTA,pH9.0 was used for antigen retrieval. 3,Secondary antibody was diluted at 1:200(room temperature, 45min).