

## SOX13 rabbit pAb

<b>Catalog No :</b>	YT7014
<b>Reactivity :</b>	Human;Mouse
<b>Applications :</b>	WB;ELISA;IHC
<b>Target :</b>	SOX13
<b>Gene Name :</b>	SOX13
<b>Protein Name :</b>	SOX13
<b>Human Gene Id :</b>	9580
<b>Human Swiss Prot No :</b>	Q9UN79
<b>Mouse Gene Id :</b>	20668
<b>Mouse Swiss Prot No :</b>	Q04891
<b>Immunogen :</b>	Synthesized peptide derived from human SOX13 AA range: 561-611
<b>Specificity :</b>	This antibody detects endogenous levels of SOX13 at Human/Mouse
<b>Formulation :</b>	Liquid in PBS containing 50% glycerol, 0.5% BSA and 0.02% sodium azide.
<b>Source :</b>	Polyclonal, Rabbit,IgG
<b>Dilution :</b>	WB 1:500-2000;IHC 1:50-300; ELISA 2000-20000
<b>Purification :</b>	The antibody was affinity-purified from rabbit antiserum by affinity-chromatography using epitope-specific immunogen.
<b>Concentration :</b>	1 mg/ml
<b>Storage Stability :</b>	-15°C to -25°C/1 year(Do not lower than -25°C)

**Molecularweight :** 68kD

**Background :** This gene encodes a member of the SOX (SRY-related HMG-box) family of transcription factors involved in the regulation of embryonic development and in the determination of cell fate. The encoded protein may act as a transcriptional regulator after forming a protein complex with other proteins. It has also been determined to be a type-1 diabetes autoantigen, also known as islet cell antibody 12. [provided by RefSeq, Jul 2008],

**Function :** function: Binds to the sequence 5'-AACAAAT-3'. similarity: Contains 1 HMG box DNA-binding domain. tissue specificity: Highly expressed in kidney, lung, and liver and low expression in thymus, brain, spleen, and muscle.,

**Subcellular Location :** Nucleus . Cytoplasm .

**Expression :** Expressed in exocrine cells and islets of Langerhans in the pancreas (at protein level) (PubMed:10871192). Expressed in the pancreas, placenta, kidney, brain, heart, lung, and liver (PubMed:10871192, PubMed:20028982). Expressed in adipose tissue, cervix, colon, esophagus, ovary, prostate, small intestine, spleen, testicle, thymus and thyroid (PubMed:20028982).

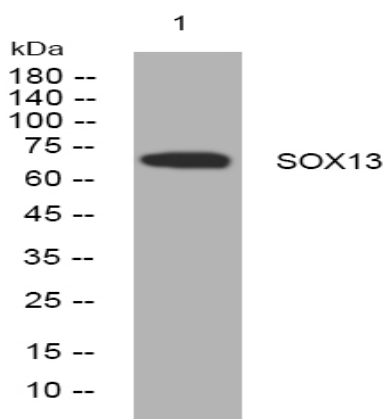
**Sort :** 16513

**No4 :** 1

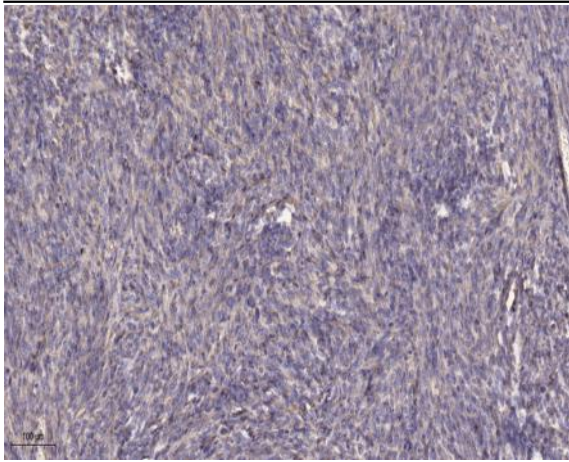
**Host :** Rabbit

**Modifications :** Unmodified

## Products Images



Western blot analysis of lysates from HEK293 cells, primary antibody was diluted at 1:1000, 4° over night



Immunohistochemical analysis of paraffin-embedded human Colon cancer. 1, Antibody was diluted at 1:200(4° overnight). 2, Tris-EDTA,pH9.0 was used for antigen retrieval. 3,Secondary antibody was diluted at 1:200(room temperature, 45min).